

Scaled data based on original data using

LM-41-14 Approved Method for Photometric Testing Of Indoor Fluorescent Luminaires

Test Report Prepared for

Cooper Lighting Solutions

(formerly Eaton)

Brand: CORELITE

Report Number: 26367

Luminaire Tested: **I2-WL-3T8-1C-UNV-04**

Issue Date: 3/3/2020

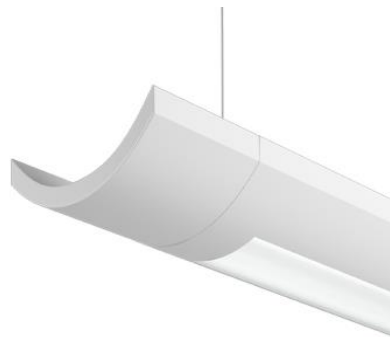
**Test Information**

Test Method: LM-41-14  
Report Number: 26367  
Test Lab: LIGHTING SCIENCES, INC.  
Issue Date: 3/3/2020  
Manufacturer: COOPER LIGHTING SOLUTIONS (FORMERLY EATON)  
Product Line: CORELITE  
Catalog Number: I2-WL-3T8-1C-UNV-04  
Description: WITH WHITE INTERIOR AND FROSTED PLASTIC LENS  
  
Light Source: THREE SYLVANIA 32 WATT T8 LAMPS  
  
FO32/835/ECO. LUMEN RATING = 2950 LMS.  
  
Ballast/Driver: -

**Summary**

Lumens per Lamp: 2950 (3 lamps)  
Luminaire Lumens: 8255.4 lumens  
Efficiency: 93.3%  
Efficacy: 92.8 lumens/watt  
Spacing Criteria (0/90/45): 1.22 / 1.25 / 1.34  
Luminous Opening: Rectangular (W 0.31' x L: 3.67' x H: 0')  
CIE Type: Semi-Indirect

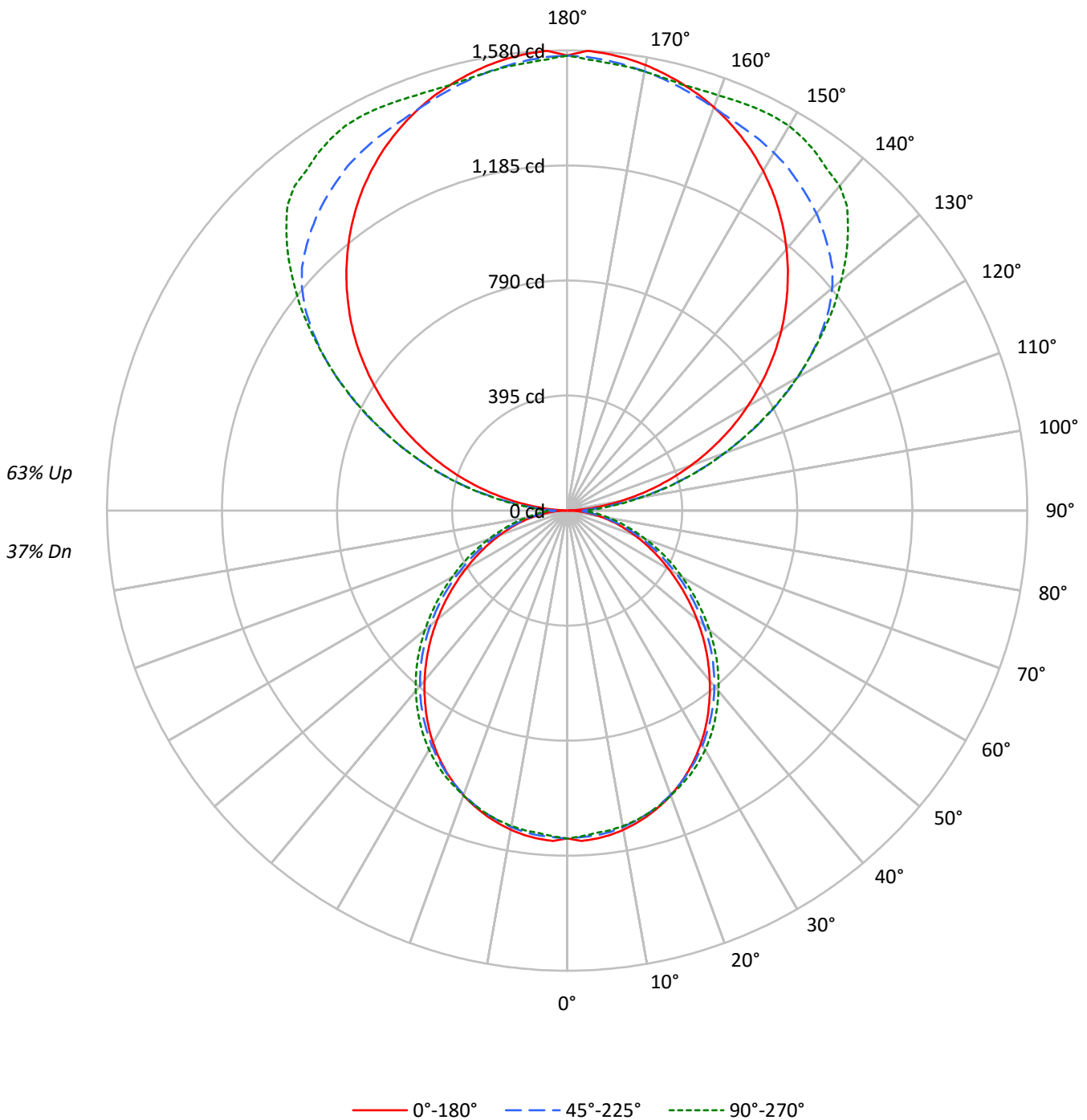
Input Watts (W): 89  
Input Voltage (V): NR  
Input Current (A<sub>in</sub>): NR  
Voltage Rise (V): NR  
Power Factor: NR  
Total Harmonic Distortion (THDi): NR  
Frequency (hertz): 60  
Stabilization Time: NR  
Operation Time: NR  
Ambient Temperature (°C): NR  
Test Distance: 25 FT



TEST NUMBER: 26367

CATALOG NUMBER: I2-WL-3T8-1C-UNV-04

### Luminous Intensity Polar Plot





TEST NUMBER: 26367

CATALOG NUMBER: I2-WL-3T8-1C-UNV-04

**COEFFICIENT OF UTILIZATION - ZONAL CAVITY METHOD:**

RF	20									20									20									20										
RC	80									70									50									30									10	0
RW	70	50	30	10	70	50	30	10	50	30	10	50	30	10	50	30	10	50	30	10	50	30	10	0														
RCR																																						
0	97	97	97	97	88	88	88	88	71	71	71	55	55	55	41	41	41	34																				
1	88	84	81	77	80	77	73	71	62	60	58	48	47	46	36	35	34	29																				
2	80	74	68	63	73	67	62	58	54	51	48	42	40	38	32	30	29	24																				
3	73	65	58	53	66	59	53	48	48	44	40	38	35	32	28	26	25	20																				
4	67	57	50	44	60	52	46	41	42	38	34	33	30	28	25	23	21	17																				
5	61	51	43	38	55	46	40	35	38	33	29	30	26	24	23	20	18	15																				
6	56	45	38	33	51	41	35	30	34	29	25	27	23	21	20	18	16	13																				
7	52	41	34	29	47	37	31	26	31	26	22	25	21	18	19	16	14	12																				
8	48	37	30	25	44	34	28	23	28	23	20	22	19	16	17	15	13	10																				
9	45	34	27	22	41	31	25	21	26	21	18	21	17	15	16	13	12	9																				
10	42	31	24	20	38	28	22	19	24	19	16	19	16	13	15	12	10	9																				

**AVERAGE LUMINANCE (cd/sqm):**

	0°	45°	90°
0°	10652	10652	10652
5°	10744	10633	10558
10°	10692	10601	10568
15°	10603	10543	10542
20°	10474	10454	10485
25°	10289	10325	10443
30°	10060	10158	10363
35°	9757	9958	10199
40°	9405	9711	9983
45°	9011	9417	9718
50°	8571	9032	9383
55°	8096	8630	9013
60°	7637	8178	8612
65°	7202	7746	8292
70°	6791	7303	7914
75°	6489	6927	7717
80°	6140	6740	7987
85°	5601	7805	10226



TEST NUMBER: 26367

CATALOG NUMBER: I2-WL-3T8-1C-UNV-04

**ZONAL LUMENS:**

Zone	Lumens	% Fixture	% Lamp
0°-10°	106.5	1.3	1.2
10°-20°	304.1	3.7	3.4
20°-30°	456.7	5.5	5.2
30°-40°	539.8	6.5	6.1
40°-50°	540.6	6.5	6.1
50°-60°	466.1	5.6	5.3
60°-70°	342.8	4.2	3.9
70°-80°	202.8	2.5	2.3
80°-90°	81.8	1.0	0.9
90°-100°	130.9	1.6	1.5
100°-110°	419.6	5.1	4.7
110°-120°	707.2	8.6	8.0
120°-130°	899.2	10.9	10.2
130°-140°	952.0	11.5	10.8
140°-150°	859.4	10.4	9.7
150°-160°	671.9	8.1	7.6
160°-170°	426.3	5.2	4.8
170°-180°	147.6	1.8	1.7
0°-30°	867.3	10.5	9.8
0°-40°	1407.1	17.0	15.9
0°-60°	2413.9	29.2	27.3
0°-90°	3041.2	36.8	34.4
90°-120°	1257.7	15.2	14.2
90°-150°	3968.3	48.1	44.8
90°-180°	5214.0	63.2	58.9
0°-180°	8255.4	100.0	93.3

**CANDELA DISTRIBUTION:**

	0°	22.5°	45°	67.5°	90°	Flux
0°	1126	1126	1126	1126	1126	
5°	1131	1122	1120	1121	1112	107
15°	1082	1076	1076	1082	1076	305
25°	986	984	989	1001	1000	454
35°	845	847	862	882	883	528
45°	674	678	704	724	726	519
55°	491	500	523	544	546	440
65°	322	326	346	366	370	319
75°	178	172	190	207	211	188
85°	52	53	72	89	94	55
90°	2	18	40	58	66	7
95°	64	97	114	129	133	78
105°	317	404	409	412	410	335
115°	586	710	746	745	742	579
125°	840	932	1066	1076	1074	751
135°	1069	1110	1270	1352	1364	825
145°	1265	1264	1380	1465	1495	791
155°	1416	1403	1445	1500	1526	653
165°	1519	1498	1504	1508	1515	429
175°	1575	1556	1552	1543	1544	150
180°	1562	1562	1562	1562	1562	



TEST NUMBER: 26367

CATALOG NUMBER: I2-WL-3T8-1C-UNV-04

**CANDELA DISTRIBUTION (FULL):**

	0°	22.5°	45°	67.5°	90°
0°	1125.9	1125.9	1125.9	1125.9	1125.9
2.5°	1135.5	1126.9	1122.5	1125.6	1119.5
5°	1131.3	1122.5	1119.6	1121.0	1111.7
7.5°	1123.8	1115.9	1113.8	1113.4	1107.4
10°	1112.9	1105.3	1103.5	1105.3	1100.0
12.5°	1099.0	1091.8	1090.6	1095.8	1089.6
15°	1082.5	1075.8	1076.4	1082.1	1076.3
17.5°	1062.9	1056.7	1058.7	1063.8	1060.2
20°	1040.3	1035.3	1038.3	1045.0	1041.4
22.5°	1014.4	1011.5	1014.6	1023.6	1020.8
25°	985.6	983.6	989.1	1000.7	1000.4
27.5°	954.6	953.3	960.8	976.6	976.1
30°	920.8	920.3	929.8	948.1	948.6
32.5°	884.0	884.2	896.5	916.1	917.2
35°	844.8	846.7	862.2	882.1	883.0
37.5°	803.8	807.4	825.8	845.8	847.0
40°	761.5	765.9	786.3	807.2	808.3
42.5°	718.0	722.8	745.6	765.7	768.3
45°	673.5	678.5	703.8	723.8	726.3
47.5°	628.0	633.9	658.9	679.8	682.1
50°	582.3	589.5	613.6	634.8	637.5
52.5°	536.2	544.6	568.4	590.0	591.7
55°	490.8	499.7	523.2	543.8	546.4
57.5°	446.5	454.4	477.8	497.1	500.3
60°	403.6	410.2	432.2	451.9	455.1
62.5°	361.8	367.4	388.5	408.2	413.3
65°	321.7	325.5	346.0	365.7	370.4
67.5°	283.0	284.6	304.6	322.2	327.7
70°	245.5	245.6	264.0	282.2	286.1
72.5°	210.5	207.9	226.3	243.5	247.3
75°	177.5	172.3	189.5	206.8	211.1
77.5°	144.6	138.7	154.6	172.4	177.1
80°	112.7	107.6	123.7	140.6	146.6
82.5°	81.4	78.6	95.8	112.6	119.4
85°	51.6	53.4	71.9	88.7	94.2
87.5°	24.5	33.0	51.0	67.4	72.9
90°	2.4	18.4	40.4	58.4	66.4
92.5°	19.7	42.1	65.3	83.8	89.1
95°	64.5	96.7	114.5	128.6	132.7
97.5°	121.4	164.0	175.2	188.9	191.0
100°	184.8	238.3	249.1	253.0	255.0
102.5°	250.7	319.8	327.1	333.0	333.8
105°	317.2	403.9	409.4	412.0	410.4
107.5°	384.5	486.5	489.7	494.1	493.3
110°	451.8	566.5	574.2	574.5	572.7



TEST NUMBER: 26367

CATALOG NUMBER: I2-WL-3T8-1C-UNV-04

**CANDELA DISTRIBUTION (continued):**

	0°	22.5°	45°	67.5°	90°
112.5°	518.8	642.5	658.6	659.0	657.6
115°	585.9	709.9	746.4	745.3	742.3
117.5°	651.3	770.3	830.2	830.2	827.2
120°	715.0	826.7	913.4	911.6	911.9
122.5°	778.1	881.0	991.9	996.7	992.9
125°	839.9	932.0	1065.7	1076.1	1073.8
127.5°	900.8	979.4	1132.5	1154.1	1155.4
130°	959.7	1025.2	1188.4	1223.5	1228.3
132.5°	1015.4	1068.1	1234.9	1294.2	1300.2
135°	1069.4	1109.9	1269.8	1352.4	1363.9
137.5°	1121.8	1145.6	1301.9	1393.6	1421.6
140°	1171.9	1183.1	1331.8	1423.0	1455.4
142.5°	1219.4	1223.1	1356.9	1439.2	1471.4
145°	1264.6	1263.7	1379.9	1465.2	1495.0
147.5°	1307.3	1303.3	1402.9	1484.3	1512.5
150°	1346.3	1338.1	1418.6	1496.1	1524.9
152.5°	1383.0	1371.7	1433.8	1498.9	1527.9
155°	1416.2	1402.8	1445.3	1500.2	1526.3
157.5°	1446.1	1429.3	1457.3	1499.2	1521.7
160°	1473.6	1453.8	1472.6	1499.4	1517.5
162.5°	1498.0	1476.9	1488.3	1501.9	1515.5
165°	1518.7	1497.8	1503.7	1508.3	1515.4
167.5°	1537.1	1516.3	1518.6	1516.1	1522.3
170°	1553.1	1532.7	1531.3	1524.8	1530.8
172.5°	1565.6	1547.3	1542.3	1534.5	1538.7
175°	1574.8	1556.5	1552.1	1543.4	1543.9
177.5°	1580.1	1562.1	1559.0	1549.4	1550.9
180°	1562.2	1562.2	1562.2	1562.2	1562.2

(END OF REPORT)