

Scaled data based on original data using

LM-41-14 Approved Method for Photometric Testing Of Indoor Fluorescent Luminaires

Test Report Prepared for

Cooper Lighting Solutions

(formerly Eaton)

Brand: CORELITE

Report Number: 26365

Luminaire Tested: **I2-WL-2T8-1C-UNV-04**

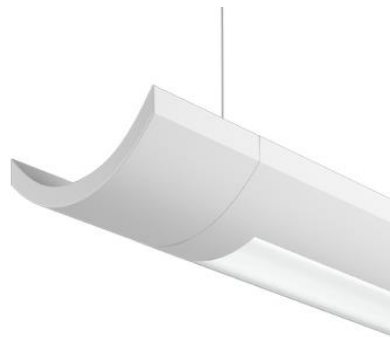
Issue Date: 3/3/2020

**Test Information**

Test Method: LM-41-14  
Report Number: 26365  
Test Lab: LIGHTING SCIENCES, INC.  
Issue Date: 3/3/2020  
Manufacturer: COOPER LIGHTING SOLUTIONS (FORMERLY EATON)  
Product Line: CORELITE  
Catalog Number: I2-WL-2T8-1C-UNV-04  
Description: WITH WHITE INTERIOR AND FROSTED PLASTIC LENS  
  
Light Source: TWO SYLVANIA 32 WATT T8 LAMPS  
  
FO32/835/ECO. LUMEN RATING = 2950 LMS.  
  
Ballast/Driver: -

**Summary**

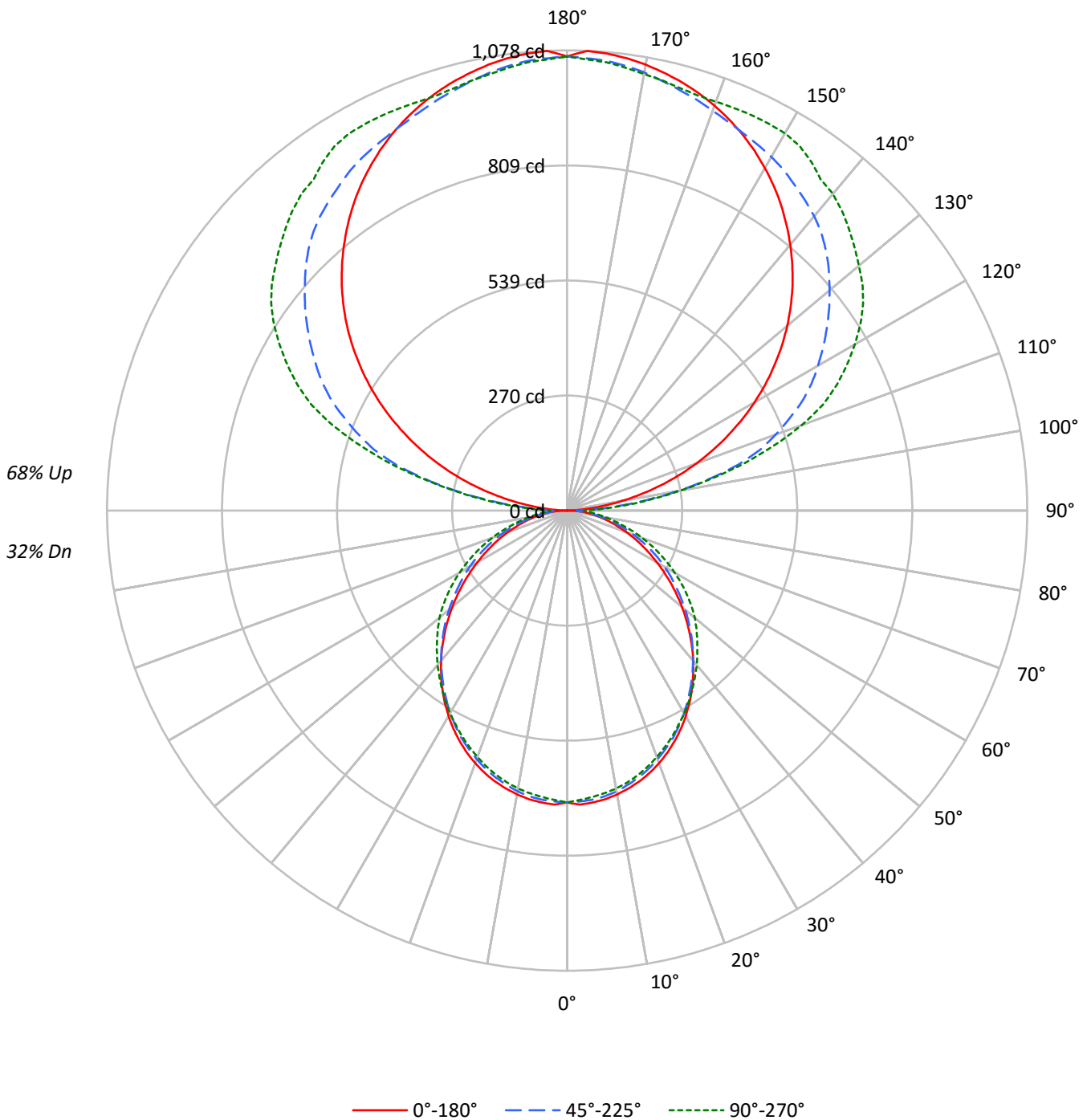
Lumens per Lamp: 2950 (2 lamps)  
Luminaire Lumens: 5652.5 lumens  
Efficiency: 95.8%  
Efficacy: 99.2 lumens/watt  
Spacing Criteria (0/90/45): 1.21 / 1.2 / 1.31  
Luminous Opening: Rectangular (W 0.31' x L: 3.67' x H: 0')  
CIE Type: Semi-Indirect  
  
Input Watts (W): 57  
Input Voltage (V): NR  
Input Current (A<sub>in</sub>): NR  
Voltage Rise (V): NR  
Power Factor: NR  
Total Harmonic Distortion (THDi): NR  
Frequency (hertz): 60  
Stabilization Time: NR  
Operation Time: NR  
Ambient Temperature (°C): NR  
Test Distance: 25 FT



TEST NUMBER: 26365

CATALOG NUMBER: I2-WL-2T8-1C-UNV-04

### Luminous Intensity Polar Plot





TEST NUMBER: 26365

CATALOG NUMBER: I2-WL-2T8-1C-UNV-04

**COEFFICIENT OF UTILIZATION - ZONAL CAVITY METHOD:**

RF	20									20									20									20									
RC	80									50									30									10									0
RW	70	50	30	10	70	50	30	10	50	30	10	50	30	10	50	30	10	50	30	10	50	30	10	0													
RCR																																					
0	99	99	99	99	89	89	89	89	70	70	70	54	54	54	38	38	38	31																			
1	90	86	82	79	81	77	74	71	61	59	57	47	46	44	34	33	32	26																			
2	82	75	69	64	73	67	63	58	54	50	47	41	39	37	29	28	27	22																			
3	74	66	59	53	67	59	53	49	47	43	40	36	33	31	26	24	23	18																			
4	68	58	51	45	61	52	46	41	42	37	34	32	29	27	23	21	20	16																			
5	62	51	44	38	56	47	40	35	37	33	29	29	26	23	21	19	17	13																			
6	57	46	38	33	51	42	35	30	34	29	25	26	23	20	19	17	15	12																			
7	53	41	34	29	47	38	31	27	30	26	22	24	20	18	17	15	13	10																			
8	49	37	30	25	44	34	28	23	28	23	19	22	18	16	16	14	12	9																			
9	46	34	27	22	41	31	25	21	25	21	17	20	16	14	15	12	11	8																			
10	42	31	24	20	38	28	22	18	23	19	15	18	15	13	14	11	10	8																			

**AVERAGE LUMINANCE (cd/sqm):**

	0°	45°	90°
0°	6470	6470	6470
5°	6521	6457	6396
10°	6486	6415	6351
15°	6426	6339	6283
20°	6342	6239	6183
25°	6221	6127	6086
30°	6071	5985	5991
35°	5887	5828	5901
40°	5673	5669	5832
45°	5430	5498	5768
50°	5168	5316	5743
55°	4886	5135	5646
60°	4600	4997	5504
65°	4336	4813	5348
70°	4077	4600	5162
75°	3849	4365	4979
80°	3765	4146	5023
85°	3919	4559	6220



TEST NUMBER: 26365

CATALOG NUMBER: I2-WL-2T8-1C-UNV-04

**ZONAL LUMENS:**

Zone	Lumens	% Fixture	% Lamp
0°-10°	64.6	1.1	1.1
10°-20°	182.7	3.2	3.1
20°-30°	271.0	4.8	4.6
30°-40°	317.7	5.6	5.4
40°-50°	320.4	5.7	5.4
50°-60°	282.7	5.0	4.8
60°-70°	213.0	3.8	3.6
70°-80°	127.7	2.3	2.2
80°-90°	49.9	0.9	0.8
90°-100°	127.4	2.3	2.2
100°-110°	390.5	6.9	6.6
110°-120°	575.5	10.2	9.8
120°-130°	653.5	11.6	11.1
130°-140°	650.3	11.5	11.0
140°-150°	581.1	10.3	9.8
150°-160°	454.5	8.0	7.7
160°-170°	289.5	5.1	4.9
170°-180°	100.5	1.8	1.7
0°-30°	518.2	9.2	8.8
0°-40°	835.9	14.8	14.2
0°-60°	1439.1	25.5	24.4
0°-90°	1829.6	32.4	31.0
90°-120°	1093.4	19.3	18.5
90°-150°	2978.3	52.7	50.5
90°-180°	3823.0	67.6	64.8
0°-180°	5652.5	100.0	95.8

**CANDELA DISTRIBUTION:**

	0°	22.5°	45°	67.5°	90°	Flux
0°	684	684	684	684	684	
5°	687	682	680	680	674	65
15°	656	651	647	647	642	185
25°	596	592	587	586	583	274
35°	510	506	505	511	511	319
45°	406	405	411	426	431	313
55°	296	298	311	336	342	265
65°	194	194	215	234	239	192
75°	105	108	119	132	136	112
85°	36	33	42	53	57	36
90°	0	11	22	34	39	4
95°	47	106	117	126	130	56
105°	225	327	415	427	431	238
115°	416	496	608	674	697	411
125°	593	646	742	818	846	530
135°	747	762	858	911	933	576
145°	874	865	930	982	997	547
155°	972	957	976	1006	1022	448
165°	1039	1022	1020	1020	1024	293
175°	1075	1059	1058	1052	1054	102
180°	1064	1064	1064	1064	1064	



TEST NUMBER: 26365

CATALOG NUMBER: I2-WL-2T8-1C-UNV-04

**CANDELA DISTRIBUTION (FULL):**

	0°	22.5°	45°	67.5°	90°
0°	683.9	683.9	683.9	683.9	683.9
2.5°	689.4	684.7	682.3	683.2	678.5
5°	686.6	681.5	679.9	679.8	673.5
7.5°	682.1	677.3	675.1	673.7	668.0
10°	675.1	670.6	667.7	665.9	661.1
12.5°	666.5	661.5	658.0	657.7	652.1
15°	656.1	651.1	647.2	646.9	641.5
17.5°	644.0	638.6	634.4	632.5	628.5
20°	629.9	624.5	619.7	618.4	614.1
22.5°	613.8	609.1	603.7	603.0	599.1
25°	595.9	591.7	586.9	586.5	583.0
27.5°	576.5	572.5	567.9	568.9	565.5
30°	555.7	551.6	547.8	550.4	548.4
32.5°	533.4	529.3	526.4	531.0	530.2
35°	509.7	505.9	504.6	510.6	510.9
37.5°	485.1	481.8	481.9	490.2	491.5
40°	459.3	457.3	459.0	469.9	472.2
42.5°	432.8	431.9	435.4	448.3	451.5
45°	405.8	405.2	410.9	426.0	431.1
47.5°	378.6	378.1	385.9	404.5	410.8
50°	351.1	351.6	361.2	382.6	390.2
52.5°	323.6	324.8	335.9	360.2	367.0
55°	296.2	297.9	311.3	336.0	342.3
57.5°	269.3	271.2	287.9	311.0	316.8
60°	243.1	245.2	264.1	285.2	290.9
62.5°	218.0	219.6	239.7	259.7	265.0
65°	193.7	194.4	215.0	234.1	238.9
67.5°	170.1	170.1	190.5	208.1	212.8
70°	147.4	148.2	166.3	182.0	186.6
72.5°	125.5	128.2	142.7	156.8	161.0
75°	105.3	108.5	119.4	132.3	136.2
77.5°	86.6	88.9	96.9	109.3	113.2
80°	69.1	69.5	76.1	88.3	92.2
82.5°	52.5	50.6	57.8	69.4	73.7
85°	36.1	33.4	42.0	53.1	57.3
87.5°	16.4	19.9	28.7	38.6	42.5
90°	0.0	11.1	22.5	34.1	39.0
92.5°	15.4	45.2	58.7	69.3	75.1
95°	47.3	106.0	117.3	125.5	130.4
97.5°	86.9	174.4	186.2	190.5	196.5
100°	130.8	233.2	262.8	264.1	268.2
102.5°	177.4	280.7	340.8	344.0	347.5
105°	225.3	326.7	415.1	427.1	430.8
107.5°	273.5	369.0	474.4	502.5	509.8
110°	321.6	411.1	519.4	574.8	584.3



TEST NUMBER: 26365

CATALOG NUMBER: I2-WL-2T8-1C-UNV-04

**CANDELA DISTRIBUTION (continued):**

	0°	22.5°	45°	67.5°	90°
112.5°	368.9	453.4	563.8	628.9	648.5
115°	415.5	496.2	608.2	674.2	696.9
117.5°	461.6	538.3	645.6	714.6	738.7
120°	506.8	577.5	678.9	753.9	777.9
122.5°	550.5	613.2	710.6	790.3	814.8
125°	592.7	646.1	742.5	817.8	846.5
127.5°	633.9	676.6	773.3	842.8	871.9
130°	673.3	707.0	802.4	865.6	892.3
132.5°	710.7	736.1	831.7	888.5	913.3
135°	746.7	762.4	858.3	910.6	933.4
137.5°	780.6	786.7	881.8	929.2	952.6
140°	813.1	810.3	900.3	946.6	968.4
142.5°	844.2	838.0	915.7	962.1	976.7
145°	873.8	865.2	929.9	981.6	997.4
147.5°	901.3	891.5	945.3	994.8	1013.0
150°	926.6	915.1	956.9	1001.4	1020.3
152.5°	950.3	936.7	966.3	1004.0	1022.1
155°	972.1	956.7	975.6	1005.9	1022.2
157.5°	991.6	974.9	985.7	1006.4	1020.7
160°	1009.5	992.6	997.1	1008.4	1019.2
162.5°	1025.0	1008.7	1009.1	1013.0	1019.3
165°	1038.7	1022.5	1019.6	1019.8	1024.3
167.5°	1050.4	1034.7	1031.0	1027.3	1031.8
170°	1060.7	1045.6	1042.1	1034.7	1038.3
172.5°	1068.8	1054.1	1050.7	1044.8	1046.6
175°	1074.6	1059.3	1057.6	1052.4	1054.0
177.5°	1078.0	1062.7	1060.5	1055.5	1057.6
180°	1063.9	1063.9	1063.9	1063.9	1063.9

(END OF REPORT)