

Scaled data based on original data using

LM-41-14 Approved Method for Photometric Testing Of Indoor Fluorescent Luminaires

Test Report Prepared for

Cooper Lighting Solutions

(formerly Eaton)

Brand: CORELITE

Report Number: 26364

Luminaire Tested: **I2-WL-2T5-1C-UNV-04**

Issue Date: 3/3/2020

Test Information

Test Method: LM-41-14
Report Number: 26364
Test Lab: LIGHTING SCIENCES, INC.
Issue Date: 3/3/2020
Manufacturer: COOPER LIGHTING SOLUTIONS (FORMERLY EATON)
Product Line: CORELITE
Catalog Number: I2-WL-2T5-1C-UNV-04
Description: WITH WHITE INTERIOR AND FROSTED PLASTIC LENS

Light Source: TWO PHILIPS 54 WATT T5 LAMPS

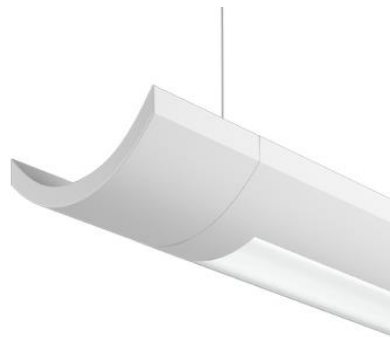
F54T5/835HO. LUMEN RATING = 4500 LMS.

Ballast/Driver: -

Summary

Lumens per Lamp: 4500 (2 lamps)
Luminaire Lumens: 8300.4 lumens
Efficiency: 92.2%
Efficacy: 70.8 lumens/watt
Spacing Criteria (0/90/45): 1.2 / 1.22 / 1.32
Luminous Opening: Rectangular (W 0.31' x L: 3.67' x H: 0')
CIE Type: Semi-Indirect

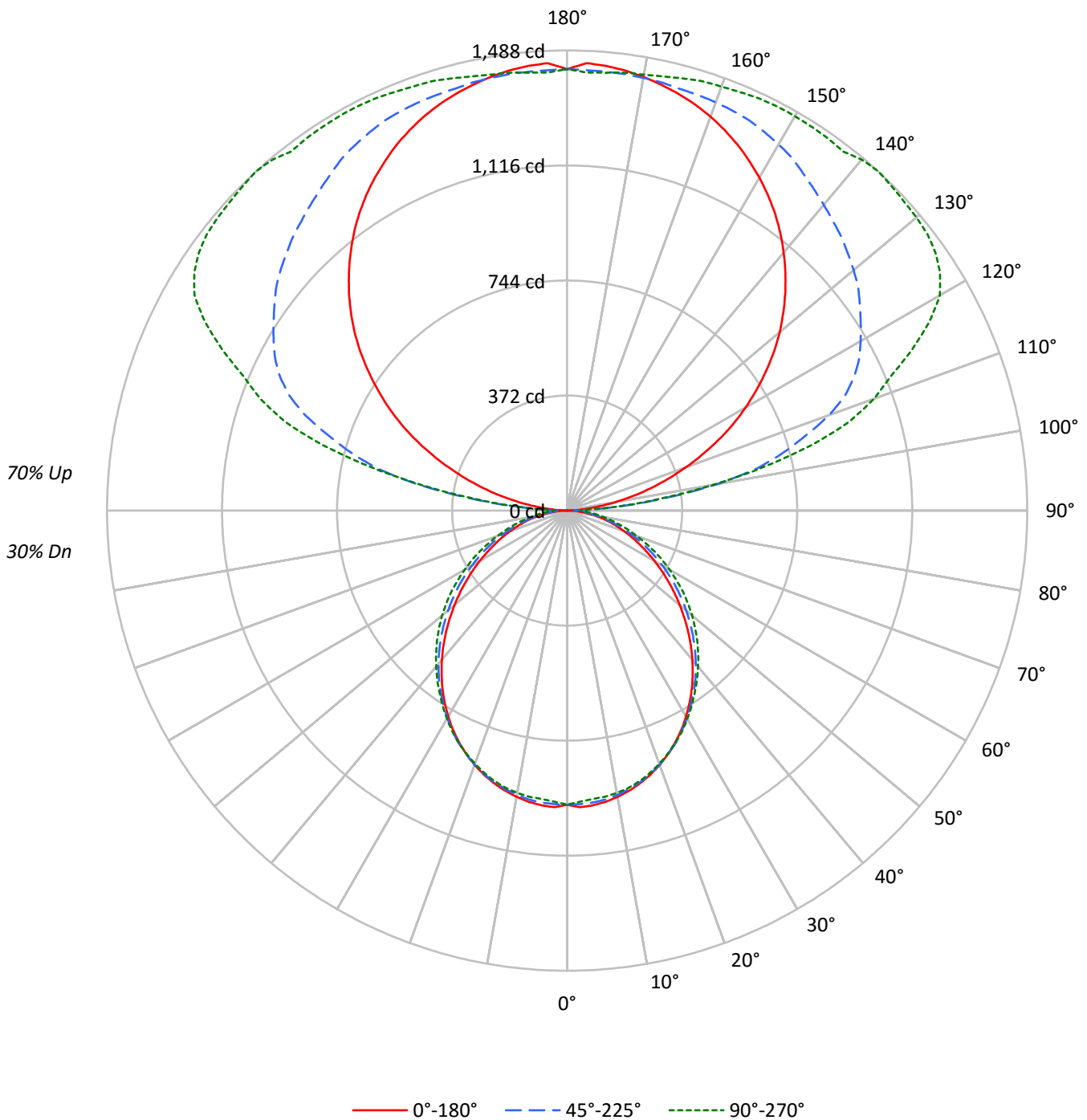
Input Watts (W): 117.3
Input Voltage (V): NR
Input Current (Ain): NR
Voltage Rise (V): NR
Power Factor: NR
Total Harmonic Distortion (THDi): NR
Frequency (hertz): 60
Stabilization Time: NR
Operation Time: NR
Ambient Temperature (°C): NR
Test Distance: 25 FT



TEST NUMBER: 26364

CATALOG NUMBER: I2-WL-2T5-1C-UNV-04

Luminous Intensity Polar Plot





TEST NUMBER: 26364

CATALOG NUMBER: I2-WL-2T5-1C-UNV-04

COEFFICIENT OF UTILIZATION - ZONAL CAVITY METHOD:

RF	20									20									20									20									
RC	80									50									30									10									0
RW	70	50	30	10	70	50	30	10	50	30	10	50	30	10	50	30	10	50	30	10	50	30	10	0													
RCR																																					
0	94	94	94	94	85	85	85	85	67	67	67	50	50	50	35	35	35	28																			
1	86	82	79	75	77	74	71	68	58	56	54	44	43	42	31	30	29	23																			
2	78	72	66	62	70	64	60	56	51	48	45	39	36	35	27	26	25	20																			
3	71	63	56	51	64	57	51	47	45	41	38	34	31	29	24	22	21	17																			
4	65	56	49	43	58	50	44	39	40	36	32	30	27	25	21	20	18	14																			
5	60	49	42	37	53	45	38	34	36	31	28	27	24	22	19	17	16	12																			
6	55	44	37	32	49	40	34	29	32	27	24	24	21	19	17	15	14	11																			
7	51	40	33	28	45	36	30	25	29	24	21	22	19	17	16	14	12	10																			
8	47	36	29	24	42	33	27	22	26	22	19	20	17	15	15	13	11	9																			
9	44	33	26	22	39	30	24	20	24	20	16	19	15	13	13	11	10	8																			
10	41	30	23	19	37	27	22	18	22	18	15	17	14	12	12	10	9	7																			

AVERAGE LUMINANCE (cd/sqm):

	0°	45°	90°
0°	8997	8997	8997
5°	9085	8999	8892
10°	9033	8971	8906
15°	8943	8909	8873
20°	8810	8806	8771
25°	8631	8661	8652
30°	8402	8467	8494
35°	8115	8240	8304
40°	7781	7995	8133
45°	7405	7704	7957
50°	6997	7393	7764
55°	6588	7076	7538
60°	6178	6723	7236
65°	5800	6376	6960
70°	5463	6000	6625
75°	5187	5670	6390
80°	4811	5378	6484
85°	4158	5970	8120



TEST NUMBER: 26364

CATALOG NUMBER: I2-WL-2T5-1C-UNV-04

ZONAL LUMENS:

Zone	Lumens	% Fixture	% Lamp
0°-10°	90.0	1.1	1.0
10°-20°	256.3	3.1	2.8
20°-30°	381.6	4.6	4.2
30°-40°	445.5	5.4	4.9
40°-50°	443.3	5.3	4.9
50°-60°	382.9	4.6	4.3
60°-70°	282.1	3.4	3.1
70°-80°	165.2	2.0	1.8
80°-90°	62.8	0.8	0.7
90°-100°	200.3	2.4	2.2
100°-110°	668.4	8.1	7.4
110°-120°	936.6	11.3	10.4
120°-130°	1016.1	12.2	11.3
130°-140°	962.6	11.6	10.7
140°-150°	830.1	10.0	9.2
150°-160°	640.2	7.7	7.1
160°-170°	400.4	4.8	4.4
170°-180°	136.0	1.6	1.5
0°-30°	728.0	8.8	8.1
0°-40°	1173.4	14.1	13.0
0°-60°	1999.6	24.1	22.2
0°-90°	2509.6	30.2	27.9
90°-120°	1805.4	21.8	20.1
90°-150°	4614.3	55.6	51.3
90°-180°	5791.0	69.8	64.3
0°-180°	8300.4	100.0	92.2

CANDELA DISTRIBUTION:

	0°	22.5°	45°	67.5°	90°	Flux
0°	951	951	951	951	951	
5°	957	949	948	946	936	91
15°	913	908	910	912	906	257
25°	827	827	830	832	829	380
35°	703	705	713	720	719	439
45°	553	558	576	592	595	427
55°	399	405	429	451	457	358
65°	259	263	285	306	311	257
75°	142	137	155	170	175	150
85°	38	40	55	70	75	42
90°	0	11	23	36	41	4
95°	57	178	190	184	184	68
105°	280	500	724	812	818	296
115°	540	704	1025	1192	1229	533
125°	785	900	1156	1371	1454	701
135°	998	1076	1253	1419	1484	769
145°	1172	1216	1331	1427	1470	733
155°	1305	1320	1393	1445	1470	601
165°	1394	1388	1412	1435	1446	394
175°	1443	1425	1424	1422	1421	137
180°	1427	1427	1427	1427	1427	



TEST NUMBER: 26364

CATALOG NUMBER: I2-WL-2T5-1C-UNV-04

CANDELA DISTRIBUTION (FULL):

	0°	22.5°	45°	67.5°	90°
0°	950.9	950.9	950.9	950.9	950.9
2.5°	960.0	953.0	950.2	949.2	942.4
5°	956.6	948.9	947.5	946.1	936.3
7.5°	950.0	943.4	942.5	940.2	933.2
10°	940.2	934.1	933.8	933.3	927.0
12.5°	927.8	922.4	922.5	924.6	917.9
15°	913.0	908.3	909.6	911.8	905.9
17.5°	895.3	891.4	893.5	893.7	889.6
20°	875.0	872.4	874.6	875.6	871.1
22.5°	852.3	851.2	853.1	854.6	850.6
25°	826.8	826.6	829.7	832.1	828.8
27.5°	799.3	800.0	803.1	808.5	804.7
30°	769.1	770.2	775.0	781.0	777.5
32.5°	736.7	738.2	744.1	751.2	749.0
35°	702.6	704.8	713.4	720.4	719.0
37.5°	667.2	669.5	681.3	689.8	690.0
40°	630.0	633.0	647.3	657.5	658.5
42.5°	592.1	595.5	612.1	624.9	627.0
45°	553.4	557.5	575.8	591.6	594.7
47.5°	514.1	519.5	539.4	557.2	561.3
50°	475.4	481.7	502.3	522.3	527.5
52.5°	437.2	443.5	465.7	486.7	491.7
55°	399.4	405.4	429.0	450.9	457.0
57.5°	362.1	367.8	391.9	413.6	419.0
60°	326.5	331.7	355.3	377.0	382.4
62.5°	291.8	296.9	319.7	341.5	346.6
65°	259.1	262.8	284.8	305.7	310.9
67.5°	227.5	229.8	250.3	270.4	274.8
70°	197.5	197.2	216.9	235.3	239.5
72.5°	168.9	166.0	185.2	202.0	206.5
75°	141.9	137.2	155.1	170.1	174.8
77.5°	114.7	110.9	125.9	140.8	145.7
80°	88.3	85.7	98.7	114.3	119.0
82.5°	62.2	61.5	75.2	90.6	95.7
85°	38.3	39.7	55.0	69.9	74.8
87.5°	17.0	23.2	37.7	51.2	56.2
90°	0.0	10.9	23.4	36.1	40.7
92.5°	15.5	62.1	69.9	68.1	67.7
95°	57.0	177.8	189.8	183.6	183.9
97.5°	105.1	287.3	334.8	323.2	317.5
100°	159.1	369.0	492.8	480.6	479.5
102.5°	218.3	444.3	629.5	654.6	651.0
105°	279.8	499.9	723.8	811.5	818.4
107.5°	342.9	548.4	810.0	926.6	957.9
110°	407.4	598.6	901.3	1006.5	1054.8



TEST NUMBER: 26364

CATALOG NUMBER: I2-WL-2T5-1C-UNV-04

CANDELA DISTRIBUTION (continued):

	0°	22.5°	45°	67.5°	90°
112.5°	472.9	652.6	972.5	1096.2	1131.8
115°	539.6	703.9	1024.8	1192.2	1229.4
117.5°	604.7	755.2	1064.7	1269.0	1320.3
120°	666.2	804.3	1096.1	1319.7	1391.9
122.5°	725.9	852.5	1125.8	1350.9	1430.0
125°	784.6	899.7	1155.6	1371.4	1454.0
127.5°	842.3	946.7	1186.2	1384.3	1468.4
130°	897.2	992.2	1209.5	1395.7	1474.2
132.5°	948.2	1034.8	1231.2	1408.6	1478.4
135°	997.6	1075.8	1253.3	1419.3	1483.5
137.5°	1044.8	1110.7	1271.4	1420.1	1488.5
140°	1089.3	1145.4	1290.8	1418.6	1481.7
142.5°	1132.4	1180.8	1310.3	1418.0	1464.1
145°	1172.0	1215.6	1330.9	1427.4	1469.9
147.5°	1209.2	1246.2	1352.9	1435.6	1471.3
150°	1243.1	1273.0	1367.3	1442.6	1473.0
152.5°	1274.8	1298.1	1380.6	1444.7	1472.5
155°	1304.9	1319.9	1392.6	1445.0	1470.0
157.5°	1331.4	1340.1	1399.4	1442.4	1464.3
160°	1355.7	1357.9	1404.8	1443.5	1458.8
162.5°	1376.6	1374.0	1408.6	1441.3	1456.0
165°	1394.5	1388.1	1411.6	1435.2	1446.4
167.5°	1409.7	1399.9	1417.4	1428.9	1437.9
170°	1424.0	1410.8	1420.6	1424.0	1431.2
172.5°	1435.3	1419.6	1423.4	1423.4	1428.1
175°	1443.3	1425.2	1424.5	1421.6	1421.4
177.5°	1448.1	1428.5	1425.1	1417.8	1417.8
180°	1427.3	1427.3	1427.3	1427.3	1427.3

(END OF REPORT)