

Scaled data based on original data using

LM-41-14 Approved Method for Photometric Testing Of Indoor Fluorescent Luminaires

Test Report Prepared for

Cooper Lighting Solutions

(formerly Eaton)

Brand: CORELITE

Report Number: ITL68839

Luminaire Tested: **I2-WL-2N5-1C-UNV-AC48-T1-4-SNL8**

Issue Date: 3/3/2020

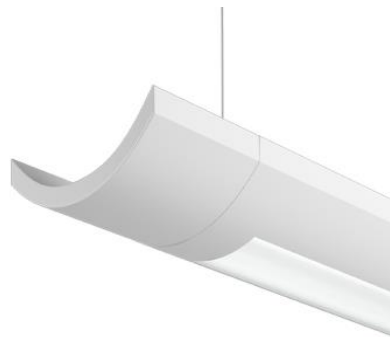
**Test Information**

Test Method: LM-41-14  
Report Number: ITL68839  
Test Lab: INDEPENDENT TESTING LABORATORIES, INC.  
Issue Date: 3/3/2020  
Manufacturer: COOPER LIGHTING SOLUTIONS (FORMERLY EATON)  
Product Line: CORELITE  
Catalog Number: I2-WL-2N5-1C-UNV-AC48-T1-4-SNL8  
Description: FABRICATED WHITE PAINTED METAL HOUSING, FABRICATED WHITE PAINTED METAL BALLAST COVERS/REFLECTORS, EXTRUDED FROSTED LINEAR PRISMATIC PLASTIC LENS BELOW LAMP, LENS PRISMS UP AND PARALLEL WITH LAMPS, LENS FROSTED BOTH SIDES. ONE U-SHAPED 2-PIECE FORMED WHITE PAINTED METAL REFLECTOR ABOVE LAMPS WITH 36 ADJUSTABLE SLOTS ON TOP AND SIDES, ADJUSTABLE REFLECTOR SET TO "DL8" FOR THIS TEST.  
Light Source: TWO 28-WATT T-5 SYLVANIA FP28/841/ECO LINEAR FLUORESCENTS.  
Ballast/Driver: UNIVERSAL B228PUNV-C

**Summary**

Lumens per Lamp: 2600 (2 lamps)  
Luminaire Lumens: 4454.9 lumens  
Efficiency: 85.7%  
Efficacy: 70.0 lumens/watt  
Spacing Criteria (0/90/45): 1.2 / 1.22 / 1.32  
Luminous Opening: Rectangular w/ Sides (W: 0.33' x L: 3.65' x H: 0.02')  
CIE Type: Semi-Direct

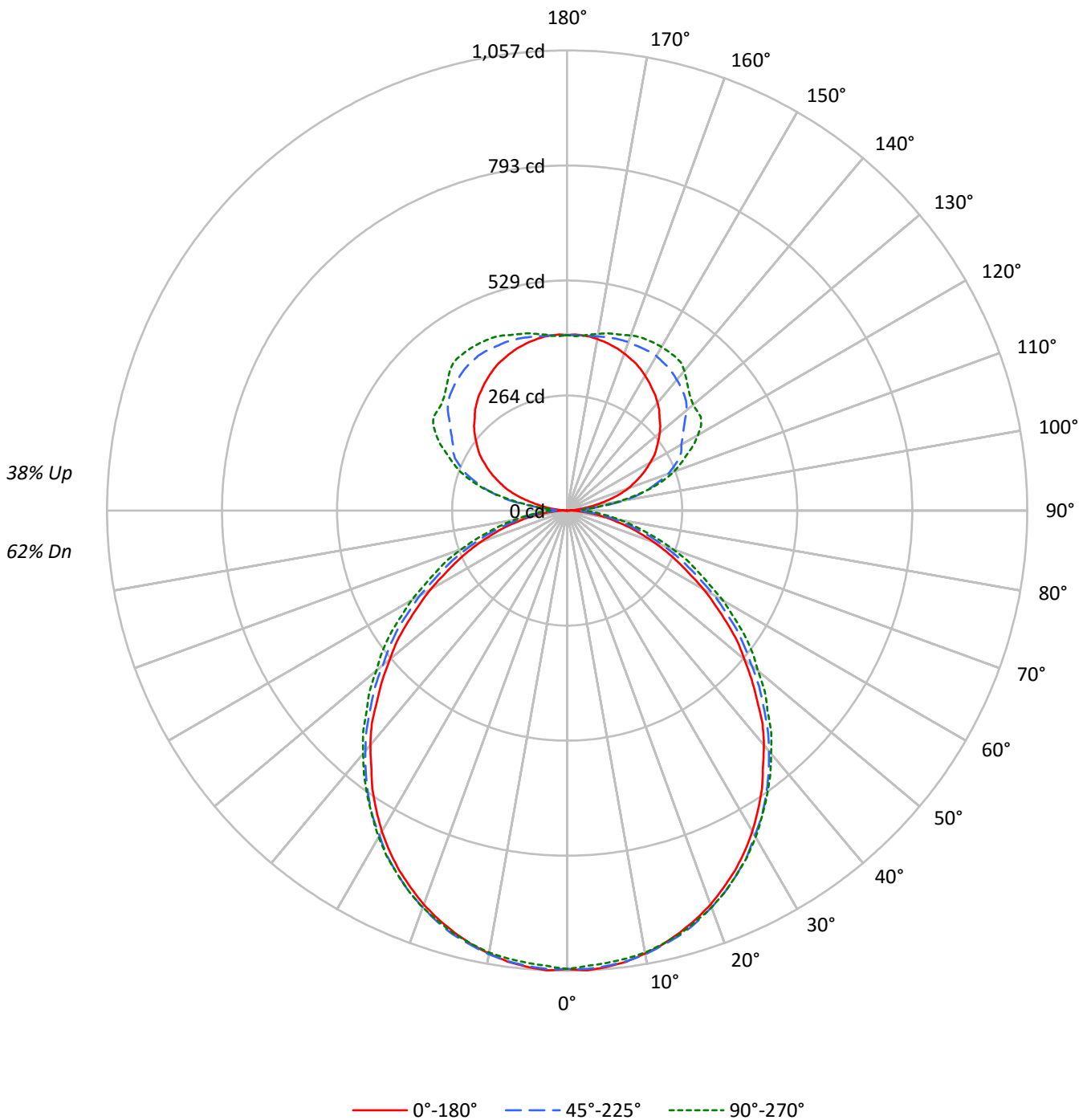
Input Watts (W): 63.6  
Input Voltage (V): NR  
Input Current (A<sub>in</sub>): NR  
Voltage Rise (V): NR  
Power Factor: NR  
Total Harmonic Distortion (THDi): NR  
Frequency (hertz): 60  
Stabilization Time: NR  
Operation Time: NR  
Ambient Temperature (°C): NR  
Test Distance: 25 FT



TEST NUMBER: ITL68839

CATALOG NUMBER: I2-WL-2N5-1C-UNV-AC48-T1-4-SNL8

### Luminous Intensity Polar Plot





TEST NUMBER: ITL68839

CATALOG NUMBER: I2-WL-2N5-1C-UNV-AC48-T1-4-SNL8

**COEFFICIENT OF UTILIZATION - ZONAL CAVITY METHOD:**

RF	20				20				20				20				20	
RC	80				70				50				30				10	0
RW	70	50	30	10	70	50	30	10	50	30	10	50	30	10	50	30	10	0
RCR																		
0	94	94	94	94	88	88	88	88	77	77	77	67	67	67	58	58	58	53
1	86	82	79	76	80	77	74	71	68	65	63	59	57	56	51	50	49	45
2	78	72	66	62	73	67	63	59	59	56	52	52	49	47	45	43	41	37
3	71	63	57	52	67	59	54	49	52	48	44	46	42	39	40	37	35	32
4	65	56	49	44	61	53	46	42	47	42	38	41	37	34	36	33	30	27
5	60	50	43	38	56	47	41	36	42	37	33	37	33	29	32	29	26	24
6	55	45	38	33	52	42	36	31	38	32	28	33	29	26	29	26	23	21
7	51	41	34	29	48	38	32	27	34	29	25	30	26	23	27	23	21	18
8	48	37	30	25	45	35	29	24	31	26	22	28	23	20	24	21	18	16
9	44	34	27	23	42	32	26	22	29	24	20	26	21	18	23	19	17	15
10	42	31	25	20	39	29	24	20	26	22	18	24	20	17	21	18	15	14

**AVERAGE LUMINANCE (cd/sqm):**

	0°	45°	90°
0°	9461	9461	9461
5°	9485	9440	9368
10°	9417	9382	9328
15°	9319	9294	9240
20°	9193	9152	9117
25°	9023	8987	8942
30°	8807	8758	8744
35°	8530	8523	8492
40°	8216	8204	8222
45°	7807	7820	7896
50°	7385	7406	7566
55°	6944	7070	7290
60°	6475	6589	6856
65°	5962	6070	6385
70°	5505	5608	5970
75°	5023	5069	5424
80°	4546	4583	5011
85°	3931	4067	4873



TEST NUMBER: ITL68839

CATALOG NUMBER: I2-WL-2N5-1C-UNV-AC48-T1-4-SNL8

**ZONAL LUMENS:**

Zone	Lumens	% Fixture	% Lamp
0°-10°	99.6	2.2	1.9
10°-20°	283.9	6.4	5.5
20°-30°	423.9	9.5	8.2
30°-40°	496.7	11.2	9.6
40°-50°	493.1	11.1	9.5
50°-60°	424.0	9.5	8.2
60°-70°	308.7	6.9	5.9
70°-80°	178.9	4.0	3.4
80°-90°	66.0	1.5	1.3
90°-100°	63.3	1.4	1.2
100°-110°	188.0	4.2	3.6
110°-120°	265.1	5.9	5.1
120°-130°	290.1	6.5	5.6
130°-140°	282.6	6.3	5.4
140°-150°	248.3	5.6	4.8
150°-160°	188.6	4.2	3.6
160°-170°	115.6	2.6	2.2
170°-180°	38.6	0.9	0.7
0°-30°	807.3	18.1	15.5
0°-40°	1304.1	29.3	25.1
0°-60°	2221.2	49.9	42.7
0°-90°	2774.8	62.3	53.4
90°-120°	516.4	11.6	9.9
90°-150°	1337.4	30.0	25.7
90°-180°	1680.0	37.7	32.3
0°-180°	4454.9	100.0	85.7

**CANDELA DISTRIBUTION:**

	0°	22.5°	45°	67.5°	90°	Flux
0°	1053	1053	1053	1053	1053	
5°	1052	1052	1050	1045	1043	100
15°	1003	1007	1009	1007	1006	283
25°	912	920	922	925	922	420
35°	780	791	797	802	800	487
45°	617	628	638	651	651	477
55°	446	461	475	494	497	400
65°	283	294	308	331	331	281
75°	147	159	166	186	184	156
85°	40	47	56	70	73	43
90°	0	11	25	37	38	3
95°	19	53	47	73	45	24
105°	104	158	196	217	201	109
115°	186	239	284	310	303	184
125°	251	296	327	361	375	224
135°	300	339	379	398	394	233
145°	341	368	403	427	432	214
155°	373	389	411	430	433	172
165°	393	398	410	418	420	111
175°	404	404	404	402	403	38
180°	403	403	403	403	403	



TEST NUMBER: ITL68839

CATALOG NUMBER: I2-WL-2N5-1C-UNV-AC48-T1-4-SNL8

**CANDELA DISTRIBUTION (FULL):**

	0°	22.5°	45°	67.5°	90°
0°	1053	1053	1053	1053	1053
2.5°	1057	1056	1054	1048	1047
5°	1052	1052	1050	1045	1043
7.5°	1045	1045	1044	1039	1038
10°	1033	1035	1035	1031	1031
12.5°	1020	1022	1022	1020	1019
15°	1003	1007	1009	1007	1006
17.5°	984	990	991	992	988
20°	963	968	970	971	970
22.5°	938	946	948	949	948
25°	912	920	922	925	922
27.5°	883	889	895	895	896
30°	851	862	862	869	866
32.5°	816	825	832	833	833
35°	780	791	797	802	800
37.5°	739	755	760	767	766
40°	703	714	721	731	729
42.5°	664	673	682	691	694
45°	617	628	638	651	651
47.5°	575	588	598	613	616
50°	531	546	553	575	572
52.5°	493	498	514	532	537
55°	446	461	475	494	497
57.5°	403	417	430	455	452
60°	363	376	390	413	413
62.5°	319	337	346	372	369
65°	283	294	308	331	331
67.5°	246	257	272	293	298
70°	212	223	235	257	257
72.5°	177	185	201	217	220
75°	147	159	166	186	184
77.5°	116	125	135	150	152
80°	90	97	107	122	123
82.5°	63	70	78	96	97
85°	40	47	56	70	73
87.5°	20	27	37	52	56
90°	0	11	25	37	38
92.5°	5	20	27	41	35
95°	19	53	47	73	45
97.5°	37	80	88	108	80
100°	58	107	133	146	120
102.5°	79	136	167	186	161
105°	104	158	196	217	201
107.5°	128	177	221	244	233
110°	150	197	247	265	261



TEST NUMBER: ITL68839

CATALOG NUMBER: I2-WL-2N5-1C-UNV-AC48-T1-4-SNL8

**CANDELA DISTRIBUTION (continued):**

	0°	22.5°	45°	67.5°	90°
112.5°	167	218	266	287	283
115°	186	239	284	310	303
117.5°	204	256	296	329	328
120°	220	270	303	348	347
122.5°	238	283	314	358	365
125°	251	296	327	361	375
127.5°	264	308	341	365	376
130°	278	319	358	374	378
132.5°	290	329	371	385	384
135°	300	339	379	398	394
137.5°	313	346	386	412	406
140°	323	355	392	422	419
142.5°	333	361	398	425	429
145°	341	368	403	427	432
147.5°	350	375	406	429	433
150°	358	380	410	430	434
152.5°	366	385	411	430	434
155°	373	389	411	430	433
157.5°	378	392	411	428	432
160°	384	394	412	423	428
162.5°	389	397	411	420	423
165°	393	398	410	418	420
167.5°	397	400	408	414	417
170°	400	402	406	410	412
172.5°	403	404	405	405	408
175°	404	404	404	402	403
177.5°	405	404	403	401	401
180°	403	403	403	403	403

(END OF REPORT)