

Scaled data based on original data using

LM-41-14 Approved Method for Photometric Testing Of Indoor Fluorescent Luminaires

Test Report Prepared for

Cooper Lighting Solutions

(formerly Eaton)

Brand: CORELITE

Report Number: ITL68838

Luminaire Tested: **I2-WL-2N5-1C-UNV-AC48-T1-4-SNL7**

Issue Date: 3/3/2020

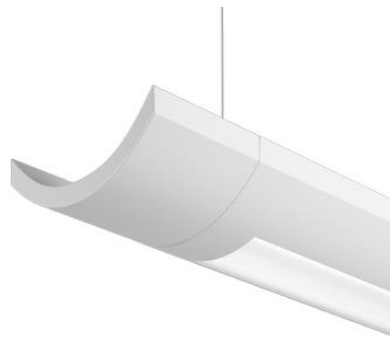
Test Information

Test Method: LM-41-14
Report Number: ITL68838
Test Lab: INDEPENDENT TESTING LABORATORIES, INC.
Issue Date: 3/3/2020
Manufacturer: COOPER LIGHTING SOLUTIONS (FORMERLY EATON)
Product Line: CORELITE
Catalog Number: I2-WL-2N5-1C-UNV-AC48-T1-4-SNL7
Description: FABRICATED WHITE PAINTED METAL HOUSING, FABRICATED WHITE PAINTED METAL BALLAST COVERS/REFLECTORS, EXTRUDED FROSTED LINEAR PRISMATIC PLASTIC LENS BELOW LAMP, LENS PRISMS UP AND PARALLEL WITH LAMPS, LENS FROSTED BOTH SIDES. ONE U-SHAPED 2-PIECE FORMED WHITE PAINTED METAL REFLECTOR ABOVE LAMPS WITH 36 ADJUSTABLE SLOTS ON TOP AND SIDES, ADJUSTABLE REFLECTOR SET TO "DL7" FOR THIS TEST.
Light Source: TWO 28-WATT T-5 SYLVANIA FP28/841/ECO LINEAR FLUORESCENTS.
Ballast/Driver: UNIVERSAL B228PUNV-C

Summary

Lumens per Lamp: 2600 (2 lamps)
Luminaire Lumens: 4364.3 lumens
Efficiency: 83.9%
Efficacy: 68.7 lumens/watt
Spacing Criteria (0/90/45): 1.2 / 1.22 / 1.32
Luminous Opening: Rectangular w/ Sides (W: 0.33' x L: 3.65' x H: 0.02')
CIE Type: Semi-Direct

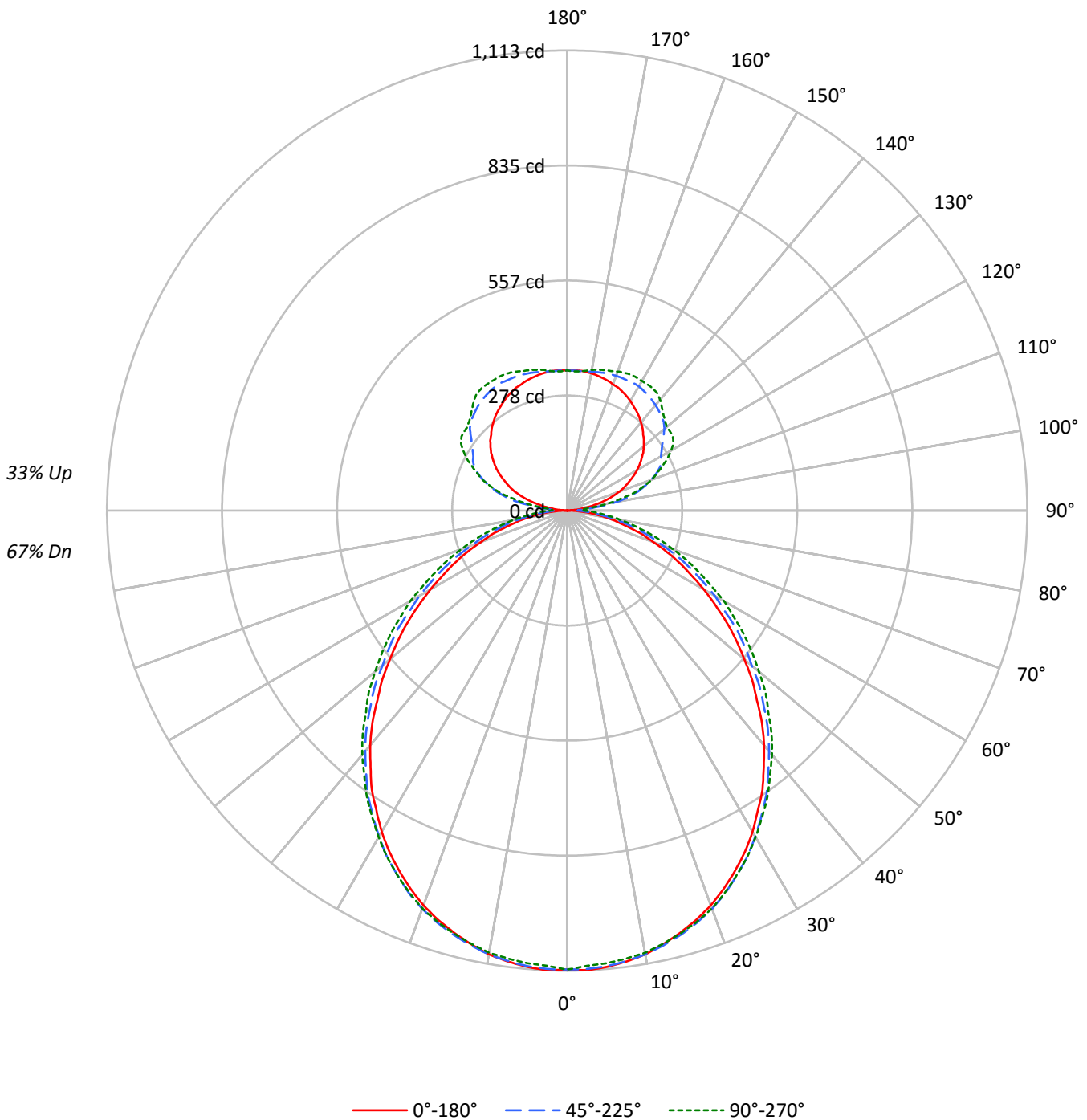
Input Watts (W): 63.5
Input Voltage (V): NR
Input Current (A_{in}): NR
Voltage Rise (V): NR
Power Factor: NR
Total Harmonic Distortion (THDi): NR
Frequency (hertz): 60
Stabilization Time: NR
Operation Time: NR
Ambient Temperature (°C): NR
Test Distance: 25 FT



TEST NUMBER: ITL68838

CATALOG NUMBER: I2-WL-2N5-1C-UNV-AC48-T1-4-SNL7

Luminous Intensity Polar Plot





TEST NUMBER: ITL68838

CATALOG NUMBER: I2-WL-2N5-1C-UNV-AC48-T1-4-SNL7

COEFFICIENT OF UTILIZATION - ZONAL CAVITY METHOD:

RF	20									20									20									20									
RC	80									50									30									10									0
RW	70	50	30	10	70	50	30	10	50	30	10	50	30	10	50	30	10	50	30	10	50	30	10	0													
RCR																																					
0	93	93	93	93	88	88	88	88	78	78	78	69	69	69	60	60	60	60	60	60	60	60	56														
1	85	81	78	75	80	77	74	71	68	66	64	60	59	57	53	52	51	51	51	51	51	51	47														
2	78	71	66	61	73	67	62	58	60	56	53	53	50	48	47	45	43	43	43	43	43	43	39														
3	71	63	56	51	66	59	53	49	53	48	45	47	43	40	41	39	36	36	36	36	36	36	33														
4	65	55	49	43	61	52	46	42	47	42	38	42	38	35	37	34	31	31	31	31	31	31	29														
5	60	49	42	37	56	47	41	36	42	37	33	38	33	30	33	30	27	27	27	27	27	27	25														
6	55	44	37	32	52	42	36	31	38	33	29	34	30	26	30	27	24	24	24	24	24	24	22														
7	51	40	33	29	48	38	32	27	35	29	25	31	27	23	28	24	21	21	21	21	21	21	19														
8	47	37	30	25	44	35	29	24	32	26	23	28	24	21	25	22	19	19	19	19	19	19	17														
9	44	34	27	23	42	32	26	22	29	24	20	26	22	19	24	20	17	17	17	17	17	17	16														
10	41	31	25	20	39	29	24	20	27	22	18	24	20	17	22	18	16	16	16	16	16	16	14														

AVERAGE LUMINANCE (cd/sqm):

	0°	45°	90°
0°	9973	9973	9973
5°	9990	9943	9871
10°	9937	9881	9826
15°	9821	9782	9727
20°	9699	9671	9624
25°	9508	9474	9427
30°	9283	9245	9209
35°	9011	8983	8969
40°	8660	8648	8696
45°	8211	8261	8345
50°	7774	7808	8016
55°	7333	7442	7656
60°	6814	6961	7271
65°	6320	6465	6771
70°	5738	5847	6296
75°	5194	5404	5807
80°	4850	4840	5418
85°	4226	4285	5274



TEST NUMBER: ITL68838

CATALOG NUMBER: I2-WL-2N5-1C-UNV-AC48-T1-4-SNL7

ZONAL LUMENS:

Zone	Lumens	% Fixture	% Lamp
0°-10°	104.9	2.4	2.0
10°-20°	299.1	6.9	5.8
20°-30°	446.9	10.2	8.6
30°-40°	523.1	12.0	10.1
40°-50°	519.4	11.9	10.0
50°-60°	446.1	10.2	8.6
60°-70°	325.5	7.5	6.3
70°-80°	188.9	4.3	3.6
80°-90°	69.5	1.6	1.3
90°-100°	59.5	1.4	1.1
100°-110°	165.7	3.8	3.2
110°-120°	228.6	5.2	4.4
120°-130°	248.2	5.7	4.8
130°-140°	240.0	5.5	4.6
140°-150°	210.0	4.8	4.0
150°-160°	159.2	3.6	3.1
160°-170°	97.3	2.2	1.9
170°-180°	32.4	0.7	0.6
0°-30°	850.8	19.5	16.4
0°-40°	1373.9	31.5	26.4
0°-60°	2339.4	53.6	45.0
0°-90°	2923.4	67.0	56.2
90°-120°	453.7	10.4	8.7
90°-150°	1152.0	26.4	22.2
90°-180°	1441.0	33.0	27.7
0°-180°	4364.3	100.0	83.9

CANDELA DISTRIBUTION:

	0°	22.5°	45°	67.5°	90°	Flux
0°	1110	1110	1110	1110	1110	
5°	1108	1108	1106	1101	1099	105
15°	1057	1060	1062	1060	1059	298
25°	961	970	972	975	972	443
35°	824	831	840	845	845	514
45°	649	660	674	685	688	502
55°	471	482	500	520	522	420
65°	300	309	328	348	351	297
75°	152	164	177	196	197	164
85°	43	47	59	75	79	46
90°	0	11	26	37	40	4
95°	18	52	47	65	41	23
105°	96	143	176	187	169	101
115°	165	210	248	262	254	164
125°	220	256	281	305	312	197
135°	260	290	322	335	329	201
145°	293	314	341	359	361	183
155°	317	330	347	361	363	146
165°	332	336	345	351	352	94
175°	340	340	339	338	338	32
180°	339	339	339	339	339	



TEST NUMBER: ITL68838

CATALOG NUMBER: I2-WL-2N5-1C-UNV-AC48-T1-4-SNL7

CANDELA DISTRIBUTION (FULL):

	0°	22.5°	45°	67.5°	90°
0°	1110	1110	1110	1110	1110
2.5°	1113	1112	1110	1104	1102
5°	1108	1108	1106	1101	1099
7.5°	1100	1100	1099	1094	1093
10°	1090	1091	1090	1085	1086
12.5°	1074	1075	1077	1074	1073
15°	1057	1060	1062	1060	1059
17.5°	1038	1043	1045	1044	1043
20°	1016	1020	1025	1023	1024
22.5°	990	996	1001	1000	999
25°	961	970	972	975	972
27.5°	931	937	944	945	944
30°	897	905	910	915	912
32.5°	859	868	875	878	878
35°	824	831	840	845	845
37.5°	781	794	799	808	806
40°	741	749	760	769	771
42.5°	698	706	719	730	732
45°	649	660	674	685	688
47.5°	607	617	632	645	651
50°	559	573	583	605	606
52.5°	515	526	542	560	564
55°	471	482	500	520	522
57.5°	425	440	452	477	477
60°	382	394	412	434	438
62.5°	339	353	368	393	391
65°	300	309	328	348	351
67.5°	261	270	288	307	313
70°	221	235	245	269	271
72.5°	189	196	213	230	235
75°	152	164	177	196	197
77.5°	123	130	144	159	164
80°	96	101	113	128	133
82.5°	67	74	82	100	103
85°	43	47	59	75	79
87.5°	20	27	41	55	60
90°	0	11	26	37	40
92.5°	9	21	27	40	35
95°	18	52	47	65	41
97.5°	36	78	83	96	66
100°	55	100	124	129	103
102.5°	75	125	152	160	134
105°	96	143	176	187	169
107.5°	116	159	196	208	194
110°	135	176	216	226	217



TEST NUMBER: ITL68838

CATALOG NUMBER: I2-WL-2N5-1C-UNV-AC48-T1-4-SNL7

CANDELA DISTRIBUTION (continued):

	0°	22.5°	45°	67.5°	90°
112.5°	151	193	233	242	235
115°	165	210	248	262	254
117.5°	181	223	257	278	274
120°	195	236	262	294	290
122.5°	208	247	271	302	305
125°	220	256	281	305	312
127.5°	232	267	293	309	314
130°	242	275	307	315	315
132.5°	252	283	317	324	321
135°	260	290	322	335	329
137.5°	270	296	328	346	339
140°	278	302	333	354	350
142.5°	286	308	337	357	358
145°	293	314	341	359	361
147.5°	299	319	344	361	362
150°	306	323	347	361	362
152.5°	312	327	348	362	363
155°	317	330	347	361	363
157.5°	322	332	347	359	361
160°	325	334	347	355	358
162.5°	329	335	346	353	354
165°	332	336	345	351	352
167.5°	335	337	343	348	349
170°	337	339	341	344	346
172.5°	339	340	340	340	341
175°	340	340	339	338	338
177.5°	340	340	339	337	337
180°	339	339	339	339	339

(END OF REPORT)