

Scaled data based on original data using

LM-41-14 Approved Method for Photometric Testing Of Indoor Fluorescent Luminaires

Test Report Prepared for

Cooper Lighting Solutions

(formerly Eaton)

Brand: CORELITE

Report Number: ITL68835

Luminaire Tested: **I2-WL-2N5-1C-UNV-AC48-T1-4-SNL4**

Issue Date: 3/3/2020

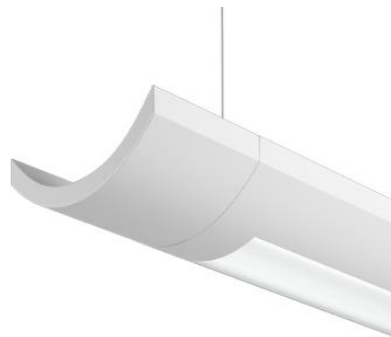
Test Information

Test Method: LM-41-14
Report Number: ITL68835
Test Lab: INDEPENDENT TESTING LABORATORIES, INC.
Issue Date: 3/3/2020
Manufacturer: COOPER LIGHTING SOLUTIONS (FORMERLY EATON)
Product Line: CORELITE
Catalog Number: I2-WL-2N5-1C-UNV-AC48-T1-4-SNL4
Description: FABRICATED WHITE PAINTED METAL HOUSING, FABRICATED WHITE PAINTED METAL BALLAST COVERS/REFLECTORS, EXTRUDED FROSTED LINEAR PRISMATIC PLASTIC LENS BELOW LAMP, LENS PRISMS UP AND PARALLEL WITH LAMPS, LENS FROSTED BOTH SIDES. ONE U-SHAPED 2-PIECE FORMED WHITE PAINTED METAL REFLECTOR ABOVE LAMPS WITH 36 ADJUSTABLE SLOTS ON TOP AND SIDES, ADJUSTABLE REFLECTOR SET TO "DL4" FOR THIS TEST.
Light Source: TWO 28-WATT T-5 SYLVANIA FP28/841/ECO LINEAR FLUORESCENTS.
Ballast/Driver: UNIVERSAL B228PUNV-C

Summary

Lumens per Lamp: 2600 (2 lamps)
Luminaire Lumens: 4086.2 lumens
Efficiency: 78.6%
Efficacy: 64.3 lumens/watt
Spacing Criteria (0/90/45): 1.2 / 1.21 / 1.31
Luminous Opening: Rectangular w/ Sides (W: 0.33' x L: 3.65' x H: 0.02')
CIE Type: Semi-Direct

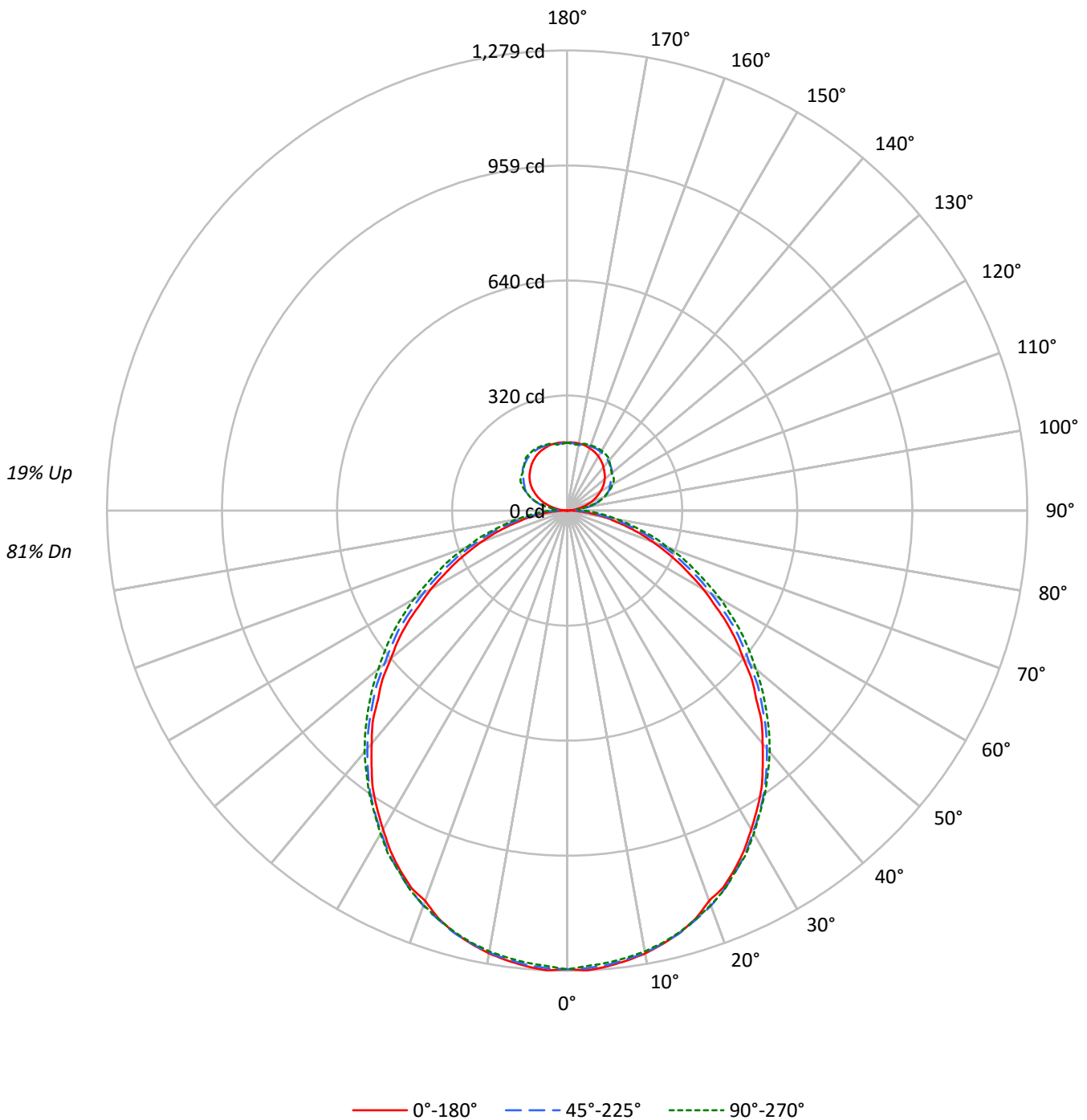
Input Watts (W): 63.5
Input Voltage (V): NR
Input Current (A_{in}): NR
Voltage Rise (V): NR
Power Factor: NR
Total Harmonic Distortion (THDi): NR
Frequency (hertz): 60
Stabilization Time: NR
Operation Time: NR
Ambient Temperature (°C): NR
Test Distance: 25 FT



TEST NUMBER: ITL68835

CATALOG NUMBER: I2-WL-2N5-1C-UNV-AC48-T1-4-SNL4

Luminous Intensity Polar Plot





TEST NUMBER: ITL68835

CATALOG NUMBER: I2-WL-2N5-1C-UNV-AC48-T1-4-SNL4

COEFFICIENT OF UTILIZATION - ZONAL CAVITY METHOD:

RF	20				20				20				20				20	
RC	80				70				50				30				10	0
RW	70	50	30	10	70	50	30	10	50	30	10	50	30	10	50	30	10	0
RCR																		
0	90	90	90	90	86	86	86	86	79	79	79	73	73	73	67	67	67	64
1	82	79	75	72	79	75	73	70	69	67	65	64	62	60	59	57	56	54
2	75	69	64	59	72	66	61	57	61	57	54	56	53	51	52	49	47	45
3	68	61	54	50	65	58	53	48	54	49	45	50	46	43	46	43	40	38
4	63	54	47	42	60	52	46	41	48	43	39	44	40	37	41	38	35	33
5	58	48	41	36	55	46	40	35	43	38	34	40	36	32	37	33	30	28
6	53	43	37	32	51	42	36	31	39	34	30	36	32	28	34	30	27	25
7	49	39	33	28	47	38	32	27	35	30	26	33	28	25	31	27	24	22
8	46	36	29	25	44	35	29	24	32	27	23	30	26	22	28	24	21	20
9	43	33	27	22	41	32	26	22	30	25	21	28	23	20	26	22	19	18
10	40	30	24	20	39	29	24	20	28	23	19	26	22	18	24	20	18	16

AVERAGE LUMINANCE (cd/sqm):

	0°	45°	90°
0°	11456	11456	11456
5°	11468	11400	11335
10°	11396	11313	11255
15°	11280	11192	11132
20°	11017	11030	10968
25°	10893	10800	10726
30°	10587	10495	10471
35°	10302	10213	10179
40°	9876	9831	9880
45°	9413	9389	9485
50°	8887	8879	9061
55°	8408	8454	8668
60°	7795	7840	8168
65°	7163	7253	7562
70°	6517	6610	6876
75°	5843	5923	6337
80°	5355	5268	5826
85°	4521	4721	5741



TEST NUMBER: ITL68835

CATALOG NUMBER: I2-WL-2N5-1C-UNV-AC48-T1-4-SNL4

ZONAL LUMENS:

Zone	Lumens	% Fixture	% Lamp
0°-10°	120.4	2.9	2.3
10°-20°	342.1	8.4	6.6
20°-30°	509.6	12.5	9.8
30°-40°	595.5	14.6	11.5
40°-50°	590.8	14.5	11.4
50°-60°	505.9	12.4	9.7
60°-70°	366.1	9.0	7.0
70°-80°	208.9	5.1	4.0
80°-90°	75.6	1.9	1.5
90°-100°	36.8	0.9	0.7
100°-110°	84.5	2.1	1.6
110°-120°	118.5	2.9	2.3
120°-130°	131.0	3.2	2.5
130°-140°	128.4	3.1	2.5
140°-150°	113.6	2.8	2.2
150°-160°	87.0	2.1	1.7
160°-170°	53.5	1.3	1.0
170°-180°	17.9	0.4	0.3
0°-30°	972.1	23.8	18.7
0°-40°	1567.6	38.4	30.1
0°-60°	2664.3	65.2	51.2
0°-90°	3314.9	81.1	63.7
90°-120°	239.8	5.9	4.6
90°-150°	612.7	15.0	11.8
90°-180°	771.0	18.9	14.8
0°-180°	4086.2	100.0	78.6

CANDELA DISTRIBUTION:

	0°	22.5°	45°	67.5°	90°	Flux
0°	1275	1275	1275	1275	1275	
5°	1272	1272	1268	1263	1262	121
15°	1214	1216	1215	1212	1212	342
25°	1101	1108	1108	1111	1106	506
35°	942	949	955	958	959	587
45°	744	753	766	777	782	576
55°	540	549	568	585	591	481
65°	340	350	368	387	392	338
75°	171	183	194	216	215	184
85°	46	50	65	81	86	50
90°	0	14	28	41	44	4
95°	13	30	28	38	29	14
105°	52	71	87	97	86	54
115°	90	109	127	137	128	89
125°	123	136	148	159	158	110
135°	147	158	172	177	170	114
145°	166	173	184	191	189	104
155°	180	183	190	195	193	83
165°	188	186	189	192	192	53
175°	190	190	188	187	186	18
180°	189	189	189	189	189	



TEST NUMBER: ITL68835

CATALOG NUMBER: I2-WL-2N5-1C-UNV-AC48-T1-4-SNL4

CANDELA DISTRIBUTION (FULL):

	0°	22.5°	45°	67.5°	90°
0°	1275	1275	1275	1275	1275
2.5°	1279	1278	1273	1269	1267
5°	1272	1272	1268	1263	1262
7.5°	1262	1264	1258	1255	1254
10°	1250	1251	1248	1244	1244
12.5°	1233	1234	1232	1229	1230
15°	1214	1216	1215	1212	1212
17.5°	1189	1195	1192	1192	1190
20°	1154	1167	1169	1166	1167
22.5°	1134	1139	1140	1140	1141
25°	1101	1108	1108	1111	1106
27.5°	1065	1072	1074	1074	1077
30°	1023	1035	1033	1039	1037
32.5°	983	991	995	997	997
35°	942	949	955	958	959
37.5°	893	907	910	919	917
40°	845	854	864	870	876
42.5°	801	807	817	828	830
45°	744	753	766	777	782
47.5°	697	703	718	730	735
50°	639	654	663	685	685
52.5°	592	599	614	632	638
55°	540	549	568	585	591
57.5°	484	501	513	537	540
60°	437	447	464	486	492
62.5°	386	399	415	439	440
65°	340	350	368	387	392
67.5°	296	305	324	344	349
70°	251	264	277	299	296
72.5°	212	220	237	254	259
75°	171	183	194	216	215
77.5°	135	143	158	173	177
80°	106	111	123	139	143
82.5°	75	81	90	110	113
85°	46	50	65	81	86
87.5°	22	27	44	59	64
90°	0	14	28	41	44
92.5°	7	19	25	33	33
95°	13	30	28	38	29
97.5°	21	40	44	51	37
100°	30	51	62	67	52
102.5°	40	63	75	84	69
105°	52	71	87	97	86
107.5°	61	80	98	108	98
110°	73	89	110	117	109



TEST NUMBER: ITL68835

CATALOG NUMBER: I2-WL-2N5-1C-UNV-AC48-T1-4-SNL4

CANDELA DISTRIBUTION (continued):

	0°	22.5°	45°	67.5°	90°
112.5°	81	99	119	127	118
115°	90	109	127	137	128
117.5°	99	116	133	145	138
120°	107	124	137	153	146
122.5°	116	131	143	158	154
125°	123	136	148	159	158
127.5°	130	143	155	162	160
130°	136	148	163	166	162
132.5°	142	153	168	171	166
135°	147	158	172	177	170
137.5°	152	161	175	183	176
140°	157	165	178	187	182
142.5°	162	169	182	189	187
145°	166	173	184	191	189
147.5°	170	176	186	193	190
150°	174	179	188	194	192
152.5°	177	181	189	195	193
155°	180	183	190	195	193
157.5°	182	183	190	195	193
160°	184	184	190	194	193
162.5°	186	185	190	193	192
165°	188	186	189	192	192
167.5°	189	187	187	190	190
170°	189	188	185	187	188
172.5°	190	189	186	185	185
175°	190	190	188	187	186
177.5°	190	190	188	188	187
180°	189	189	189	189	189

(END OF REPORT)