

Scaled data based on original data using

LM-41-14 Approved Method for Photometric Testing Of Indoor Fluorescent Luminaires

Test Report Prepared for

Cooper Lighting Solutions

(formerly Eaton)

Brand: CORELITE

Report Number: ITL68833

Luminaire Tested: **I2-WL-2N5-1C-UNV-AC48-T1-4-SNL2**

Issue Date: 3/3/2020

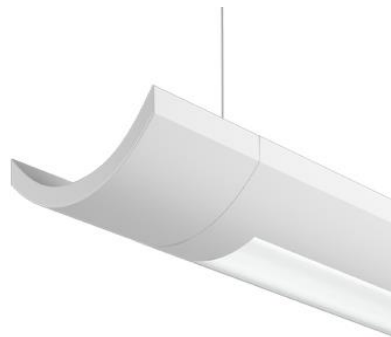
Test Information

Test Method: LM-41-14
Report Number: ITL68833
Test Lab: INDEPENDENT TESTING LABORATORIES, INC.
Issue Date: 3/3/2020
Manufacturer: COOPER LIGHTING SOLUTIONS (FORMERLY EATON)
Product Line: CORELITE
Catalog Number: I2-WL-2N5-1C-UNV-AC48-T1-4-SNL2
Description: FABRICATED WHITE PAINTED METAL HOUSING, FABRICATED WHITE PAINTED METAL BALLAST COVERS/REFLECTORS, EXTRUDED FROSTED LINEAR PRISMATIC PLASTIC LENS BELOW LAMP, LENS PRISMS UP AND PARALLEL WITH LAMPS, LENS FROSTED BOTH SIDES. ONE U-SHAPED 2-PIECE FORMED WHITE PAINTED METAL REFLECTOR ABOVE LAMPS WITH 36 ADJUSTABLE SLOTS ON TOP AND SIDES, ADJUSTABLE REFLECTOR SET TO "DL2" FOR THIS TEST.
Light Source: TWO 28-WATT T-5 SYLVANIA FP28/841/ECO LINEAR FLUORESCENTS.
Ballast/Driver: UNIVERSAL B228PUNV-C

Summary

Lumens per Lamp: 2600 (2 lamps)
Luminaire Lumens: 3961.0 lumens
Efficiency: 76.2%
Efficacy: 63.1 lumens/watt
Spacing Criteria (0/90/45): 1.2 / 1.21 / 1.32
Luminous Opening: Rectangular w/ Sides (W: 0.33' x L: 3.65' x H: 0.02')
CIE Type: Semi-Direct

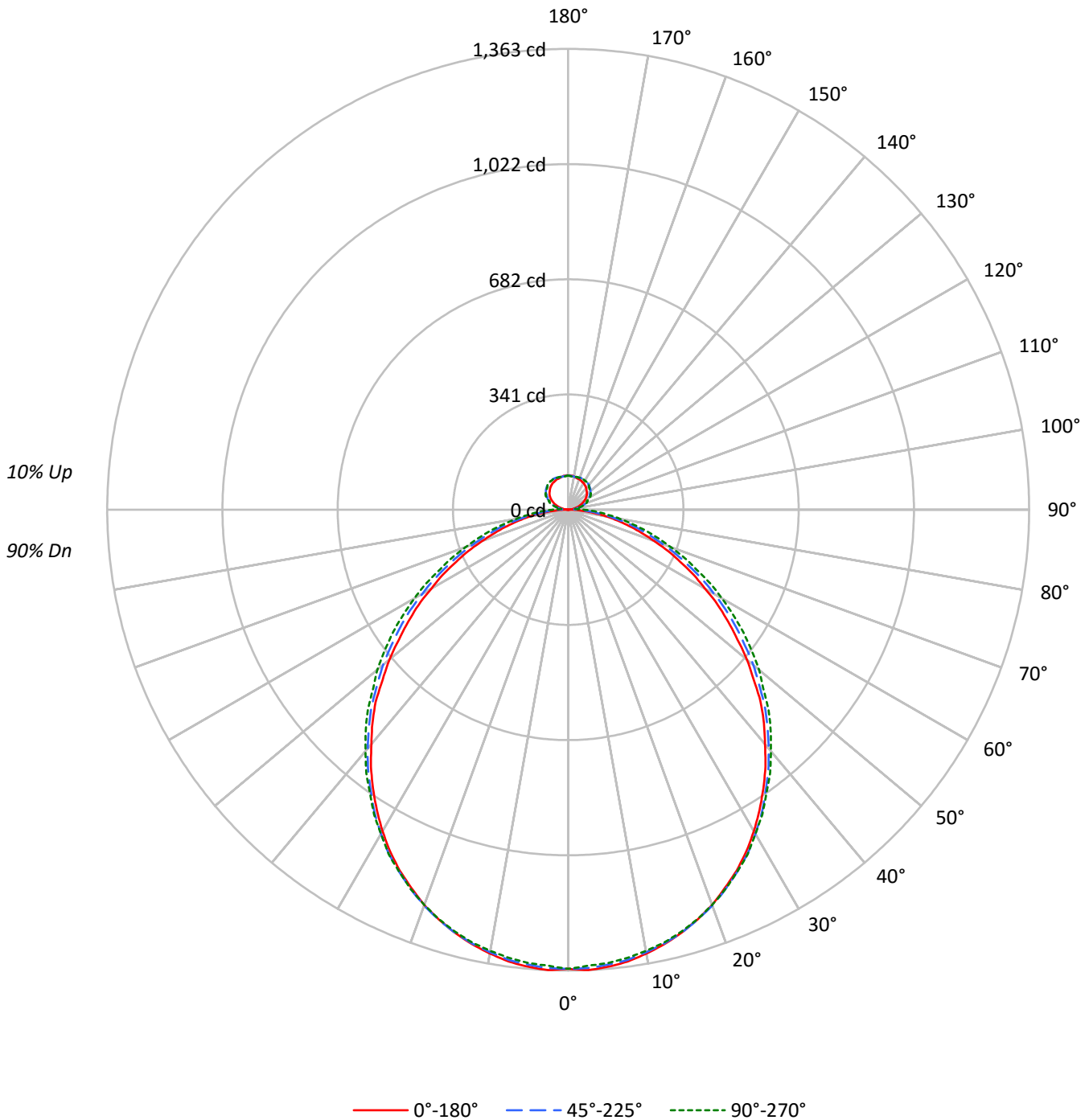
Input Watts (W): 62.8
Input Voltage (V): NR
Input Current (A_{in}): NR
Voltage Rise (V): NR
Power Factor: NR
Total Harmonic Distortion (THDi): NR
Frequency (hertz): 60
Stabilization Time: NR
Operation Time: NR
Ambient Temperature (°C): NR
Test Distance: 25 FT



TEST NUMBER: ITL68833

CATALOG NUMBER: I2-WL-2N5-1C-UNV-AC48-T1-4-SNL2

Luminous Intensity Polar Plot





TEST NUMBER: ITL68833

CATALOG NUMBER: I2-WL-2N5-1C-UNV-AC48-T1-4-SNL2

COEFFICIENT OF UTILIZATION - ZONAL CAVITY METHOD:

RF	20				20				20				20				20	
RC	80				70				50				30				10	0
RW	70	50	30	10	70	50	30	10	50	30	10	50	30	10	50	30	10	0
RCR																		
0	89	89	89	89	86	86	86	86	80	80	80	75	75	75	70	70	70	68
1	81	78	74	72	78	75	72	70	70	68	66	66	64	63	62	61	59	57
2	74	68	63	59	71	66	61	57	62	58	55	58	55	52	55	52	50	48
3	68	60	54	49	65	58	52	48	55	50	46	51	48	44	49	45	43	41
4	62	53	47	42	60	52	46	41	49	44	40	46	42	38	43	40	37	35
5	57	47	41	36	55	46	40	35	44	38	34	41	37	33	39	35	32	30
6	53	43	36	31	51	42	35	31	40	34	30	38	33	29	36	32	28	27
7	49	39	32	28	47	38	32	27	36	31	27	34	30	26	33	28	25	24
8	45	35	29	25	44	35	29	25	33	28	24	31	27	23	30	26	23	21
9	43	33	26	22	41	32	26	22	30	25	22	29	24	21	28	24	21	19
10	40	30	24	20	39	29	24	20	28	23	20	27	22	19	26	22	19	17

AVERAGE LUMINANCE (cd/sqm):

	0°	45°	90°
0°	12202	12202	12202
5°	12235	12146	12090
10°	12152	12047	11988
15°	12032	11929	11867
20°	11876	11757	11692
25°	11655	11521	11464
30°	11364	11247	11178
35°	11001	10876	10848
40°	10577	10491	10511
45°	10185	10075	10164
50°	9596	9576	9749
55°	8984	9020	9270
60°	8330	8414	8715
65°	7710	7765	8063
70°	7011	7088	7457
75°	6390	6504	6956
80°	5809	5739	6355
85°	5012	5084	6208



TEST NUMBER: ITL68833

CATALOG NUMBER: I2-WL-2N5-1C-UNV-AC48-T1-4-SNL2

ZONAL LUMENS:

Zone	Lumens	% Fixture	% Lamp
0°-10°	128.3	3.2	2.5
10°-20°	365.1	9.2	7.0
20°-30°	544.2	13.7	10.5
30°-40°	636.4	16.1	12.2
40°-50°	633.2	16.0	12.2
50°-60°	542.6	13.7	10.4
60°-70°	393.8	9.9	7.6
70°-80°	226.3	5.7	4.4
80°-90°	81.8	2.1	1.6
90°-100°	24.3	0.6	0.5
100°-110°	42.7	1.1	0.8
110°-120°	61.4	1.5	1.2
120°-130°	69.1	1.7	1.3
130°-140°	68.1	1.7	1.3
140°-150°	60.3	1.5	1.2
150°-160°	45.9	1.2	0.9
160°-170°	28.1	0.7	0.5
170°-180°	9.6	0.2	0.2
0°-30°	1037.6	26.2	20.0
0°-40°	1674.0	42.3	32.2
0°-60°	2849.7	71.9	54.8
0°-90°	3551.5	89.7	68.3
90°-120°	128.4	3.2	2.5
90°-150°	325.9	8.2	6.3
90°-180°	409.0	10.3	7.9
0°-180°	3961.0	100.0	76.2

CANDELA DISTRIBUTION:

	0°	22.5°	45°	67.5°	90°	Flux
0°	1358	1358	1358	1358	1358	
5°	1357	1357	1351	1346	1346	129
15°	1295	1298	1295	1292	1292	365
25°	1178	1183	1182	1183	1182	542
35°	1006	1017	1017	1025	1022	629
45°	805	812	822	834	838	618
55°	577	588	606	624	632	517
65°	366	380	394	421	418	364
75°	187	196	213	231	236	199
85°	51	56	70	87	93	55
90°	0	14	29	43	46	4
95°	9	20	18	22	22	9
105°	26	35	42	50	44	28
115°	47	56	66	72	61	47
125°	65	72	78	85	82	58
135°	77	83	91	95	89	60
145°	87	92	98	102	98	55
155°	93	97	101	103	100	43
165°	97	97	99	101	100	28
175°	101	101	100	100	99	10
180°	101	101	101	101	101	



TEST NUMBER: ITL68833

CATALOG NUMBER: I2-WL-2N5-1C-UNV-AC48-T1-4-SNL2

CANDELA DISTRIBUTION (FULL):

	0°	22.5°	45°	67.5°	90°
0°	1358	1358	1358	1358	1358
2.5°	1363	1362	1357	1351	1350
5°	1357	1357	1351	1346	1346
7.5°	1348	1347	1343	1338	1337
10°	1333	1334	1329	1326	1325
12.5°	1316	1318	1314	1310	1311
15°	1295	1298	1295	1292	1292
17.5°	1271	1276	1272	1272	1270
20°	1244	1247	1246	1244	1244
22.5°	1211	1219	1215	1215	1215
25°	1178	1183	1182	1183	1182
27.5°	1140	1147	1148	1148	1149
30°	1098	1103	1107	1107	1107
32.5°	1053	1061	1065	1067	1068
35°	1006	1017	1017	1025	1022
37.5°	958	965	972	977	981
40°	905	918	922	933	932
42.5°	857	864	872	881	886
45°	805	812	822	834	838
47.5°	744	759	765	786	782
50°	690	699	715	732	737
52.5°	631	646	658	682	683
55°	577	588	606	624	632
57.5°	525	536	554	575	578
60°	467	479	498	521	525
62.5°	419	430	448	471	475
65°	366	380	394	421	418
67.5°	320	329	346	368	373
70°	270	283	297	322	321
72.5°	227	237	254	273	278
75°	187	196	213	231	236
77.5°	149	160	170	193	193
80°	115	121	134	151	156
82.5°	80	89	97	116	121
85°	51	56	70	87	93
87.5°	24	31	48	63	69
90°	0	14	29	43	46
92.5°	4	15	23	28	32
95°	9	20	18	22	22
97.5°	13	22	23	25	20
100°	16	26	29	35	28
102.5°	21	31	36	43	37
105°	26	35	42	50	44
107.5°	32	40	49	56	50
110°	37	45	55	62	56



TEST NUMBER: ITL68833

CATALOG NUMBER: I2-WL-2N5-1C-UNV-AC48-T1-4-SNL2

CANDELA DISTRIBUTION (continued):

	0°	22.5°	45°	67.5°	90°
112.5°	43	51	61	67	61
115°	47	56	66	72	61
117.5°	52	60	68	77	71
120°	57	64	71	81	75
122.5°	61	68	75	84	79
125°	65	72	78	85	82
127.5°	69	76	83	87	83
130°	72	79	86	90	84
132.5°	75	81	89	92	86
135°	77	83	91	95	89
137.5°	80	86	93	98	91
140°	83	88	95	100	95
142.5°	85	90	97	101	97
145°	87	92	98	102	98
147.5°	89	94	100	103	99
150°	91	95	101	103	99
152.5°	92	96	101	103	100
155°	93	97	101	103	100
157.5°	95	97	101	103	101
160°	96	97	101	102	100
162.5°	96	96	100	101	100
165°	97	97	99	101	100
167.5°	98	98	99	100	100
170°	100	100	99	100	100
172.5°	101	101	100	99	99
175°	101	101	100	100	99
177.5°	102	102	101	101	100
180°	101	101	101	101	101

(END OF REPORT)