

Scaled data based on original data using

LM-41-14 Approved Method for Photometric Testing Of Indoor Fluorescent Luminaires

Test Report Prepared for

Cooper Lighting Solutions

(formerly Eaton)

Brand: CORELITE

Report Number: 26362

Luminaire Tested: **I2-WL-1T5-1C-UNV-04**

Issue Date: 3/3/2020

Test Information

Test Method: LM-41-14
Report Number: 26362
Test Lab: LIGHTING SCIENCES, INC.
Issue Date: 3/3/2020
Manufacturer: COOPER LIGHTING SOLUTIONS (FORMERLY EATON)
Product Line: CORELITE
Catalog Number: I2-WL-1T5-1C-UNV-04
Description: WITH WHITE INTERIOR AND FROSTED PLASTIC LENS

Light Source: ONE PHILIPS 54 WATT T5 LAMP

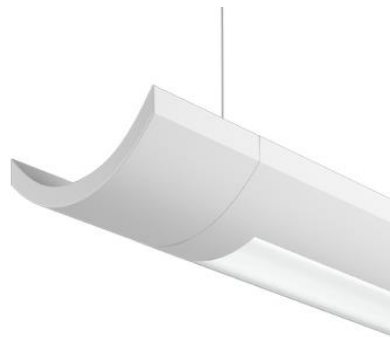
F54T5/835HO. LUMEN RATING = 4500 LMS.

Ballast/Driver: -

Summary

Lumens per Lamp: 4500 (1 lamp)
Luminaire Lumens: 4301.2 lumens
Efficiency: 95.6%
Efficacy: 72.9 lumens/watt
Spacing Criteria (0/90/45): 1.21 / 1.33 / 1.37
Luminous Opening: Rectangular (W 0.31' x L: 3.67' x H: 0')
CIE Type: Semi-Indirect

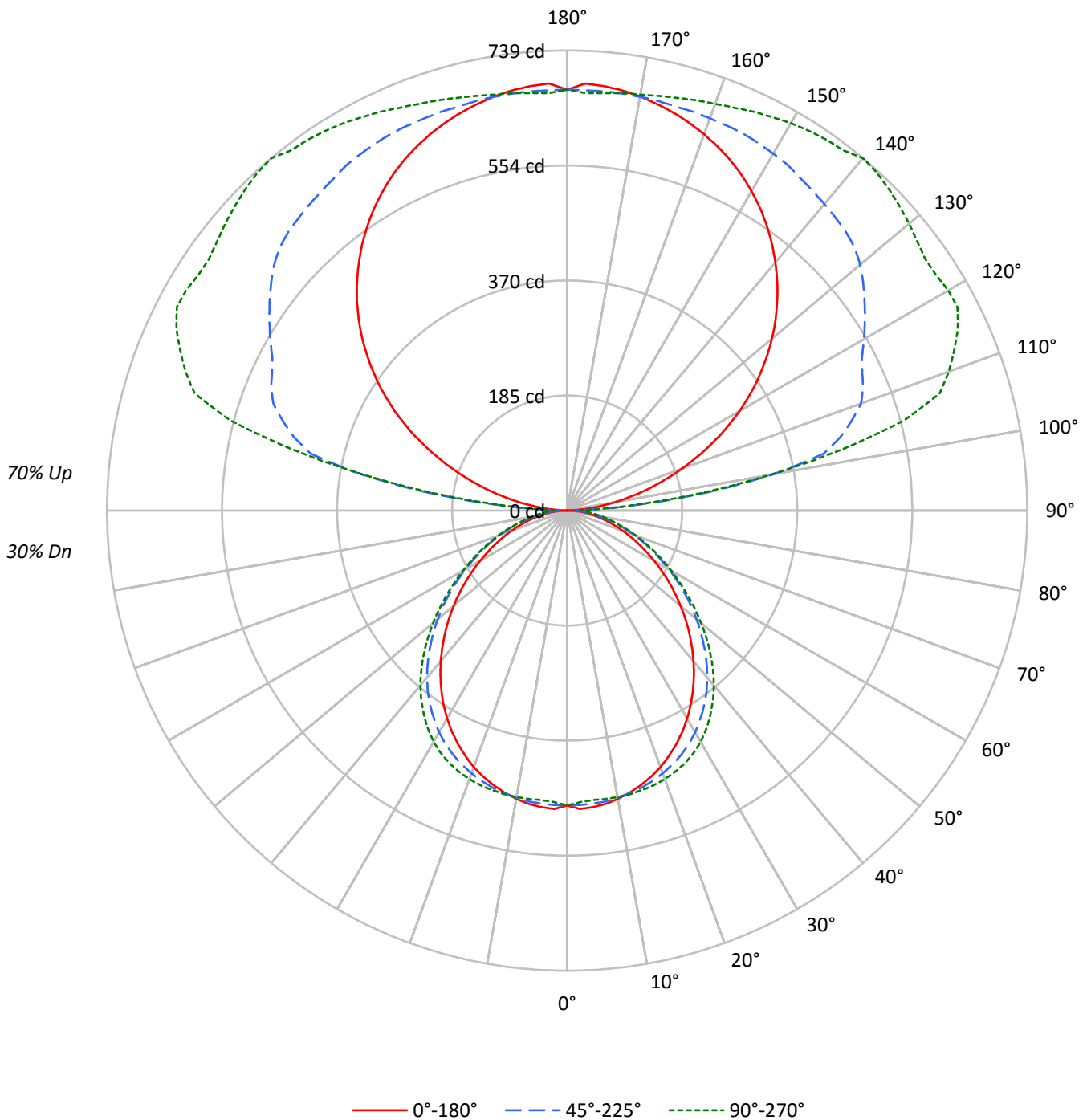
Input Watts (W): 59
Input Voltage (V): NR
Input Current (A_{in}): NR
Voltage Rise (V): NR
Power Factor: NR
Total Harmonic Distortion (THDi): NR
Frequency (hertz): 60
Stabilization Time: NR
Operation Time: NR
Ambient Temperature (°C): NR
Test Distance: 25 FT



TEST NUMBER: 26362

CATALOG NUMBER: I2-WL-1T5-1C-UNV-04

Luminous Intensity Polar Plot





TEST NUMBER: 26362

CATALOG NUMBER: I2-WL-1T5-1C-UNV-04

COEFFICIENT OF UTILIZATION - ZONAL CAVITY METHOD:

RF	20				20				20				20				20	
RC	80				70				50				30				10	0
RW	70	50	30	10	70	50	30	10	50	30	10	50	30	10	50	30	10	0
RCR																		
0	98	98	98	98	88	88	88	88	69	69	69	52	52	52	36	36	36	29
1	89	85	82	78	80	77	74	71	60	58	57	46	44	43	32	31	31	24
2	81	74	69	64	73	67	62	58	53	50	47	40	38	36	28	27	26	20
3	74	65	58	53	66	59	53	48	47	43	39	35	33	30	25	23	22	17
4	68	58	50	45	60	52	46	41	41	37	33	32	28	26	22	20	19	15
5	62	51	44	38	55	46	40	35	37	32	29	28	25	22	20	18	16	13
6	57	46	38	33	51	41	35	30	33	28	25	25	22	20	18	16	14	11
7	53	41	34	29	47	37	31	26	30	25	22	23	20	17	17	14	13	10
8	49	37	30	25	44	34	28	23	27	23	19	21	18	15	15	13	11	9
9	45	34	27	22	41	31	25	21	25	20	17	19	16	14	14	12	10	8
10	42	31	24	20	38	28	22	18	23	18	15	18	15	12	13	11	9	7

AVERAGE LUMINANCE (cd/sqm):

	0°	45°	90°
0°	4481	4481	4481
5°	4540	4487	4432
10°	4515	4501	4487
15°	4471	4513	4553
20°	4412	4520	4619
25°	4323	4520	4672
30°	4210	4491	4685
35°	4069	4426	4632
40°	3900	4324	4530
45°	3708	4171	4354
50°	3503	3995	4136
55°	3279	3787	3890
60°	3050	3576	3652
65°	2841	3356	3448
70°	2633	3167	3253
75°	2449	2950	3089
80°	2321	2817	3166
85°	2225	3181	3995



TEST NUMBER: 26362

CATALOG NUMBER: I2-WL-1T5-1C-UNV-04

ZONAL LUMENS:

Zone	Lumens	% Fixture	% Lamp
0°-10°	45.0	1.0	1.0
10°-20°	130.1	3.0	2.9
20°-30°	199.0	4.6	4.4
30°-40°	237.5	5.5	5.3
40°-50°	236.7	5.5	5.3
50°-60°	200.1	4.7	4.4
60°-70°	144.1	3.4	3.2
70°-80°	83.8	1.9	1.9
80°-90°	32.8	0.8	0.7
90°-100°	132.1	3.1	2.9
100°-110°	412.5	9.6	9.2
110°-120°	498.3	11.6	11.1
120°-130°	504.3	11.7	11.2
130°-140°	477.0	11.1	10.6
140°-150°	406.1	9.4	9.0
150°-160°	307.2	7.1	6.8
160°-170°	190.3	4.4	4.2
170°-180°	64.4	1.5	1.4
0°-30°	374.1	8.7	8.3
0°-40°	611.6	14.2	13.6
0°-60°	1048.4	24.4	23.3
0°-90°	1309.2	30.4	29.1
90°-120°	1042.9	24.2	23.2
90°-150°	2430.2	56.5	54.0
90°-180°	2992.0	69.6	66.5
0°-180°	4301.2	100.0	95.6

CANDELA DISTRIBUTION:

	0°	22.5°	45°	67.5°	90°	Flux
0°	474	474	474	474	474	
5°	478	473	472	472	467	45
15°	456	456	461	467	465	129
25°	414	419	433	446	448	191
35°	352	362	383	399	401	220
45°	277	290	312	326	325	214
55°	199	210	230	238	236	178
65°	127	135	150	155	154	126
75°	67	73	81	85	84	71
85°	20	23	29	36	37	21
90°	0	8	14	19	21	2
95°	30	124	126	119	115	34
105°	135	264	454	554	561	143
115°	258	363	523	659	692	255
125°	377	452	583	672	703	336
135°	477	526	633	709	730	368
145°	559	586	652	708	727	350
155°	621	631	668	695	707	286
165°	661	660	672	681	686	187
175°	684	676	676	672	673	65
180°	676	676	676	676	676	



TEST NUMBER: 26362

CATALOG NUMBER: I2-WL-1T5-1C-UNV-04

CANDELA DISTRIBUTION (FULL):

	0°	22.5°	45°	67.5°	90°
0°	473.6	473.6	473.6	473.6	473.6
2.5°	479.8	474.9	473.2	472.7	468.7
5°	478.0	473.2	472.4	471.9	466.7
7.5°	475.0	471.0	471.1	470.8	467.3
10°	470.0	466.9	468.5	469.9	467.1
12.5°	463.9	461.7	464.7	469.0	466.4
15°	456.5	455.7	460.8	466.8	464.8
17.5°	448.1	448.1	455.4	462.6	462.4
20°	438.2	439.7	448.9	458.6	458.8
22.5°	426.8	430.1	441.4	453.2	453.9
25°	414.1	418.9	433.0	446.2	447.5
27.5°	400.4	406.6	422.9	437.7	439.3
30°	385.4	392.5	411.1	426.9	428.8
32.5°	369.4	377.4	397.5	414.1	416.0
35°	352.3	361.8	383.2	399.4	401.0
37.5°	334.3	345.4	367.4	383.0	384.6
40°	315.8	328.0	350.1	365.8	366.8
42.5°	296.5	309.4	331.5	346.4	346.7
45°	277.1	289.7	311.7	325.8	325.4
47.5°	257.6	269.8	291.6	304.1	303.6
50°	238.0	249.7	271.4	281.9	281.0
52.5°	218.3	229.6	250.8	259.6	258.2
55°	198.8	209.7	229.6	237.5	235.8
57.5°	179.7	189.8	209.3	216.0	213.9
60°	161.2	170.4	189.0	194.8	193.0
62.5°	143.6	151.7	168.9	174.6	173.1
65°	126.9	134.6	149.9	155.2	154.0
67.5°	110.7	118.3	131.9	136.7	135.6
70°	95.2	102.8	114.5	118.5	117.6
72.5°	80.5	87.8	97.2	100.8	100.4
75°	67.0	73.0	80.7	84.8	84.5
77.5°	54.3	59.1	65.5	70.3	70.3
80°	42.6	45.8	51.7	57.3	58.1
82.5°	31.8	33.2	39.8	45.9	46.8
85°	20.5	22.9	29.3	35.6	36.8
87.5°	8.5	14.1	20.3	26.3	27.8
90°	0.1	8.2	13.6	19.0	20.8
92.5°	9.1	40.8	39.3	37.5	38.4
95°	29.6	124.5	126.1	118.8	115.1
97.5°	53.0	196.7	229.0	223.2	219.5
100°	78.4	224.1	335.9	334.3	331.3
102.5°	105.9	247.1	421.5	450.2	449.7
105°	134.6	263.9	453.9	553.6	560.8
107.5°	164.4	285.6	478.8	595.7	627.6
110°	195.3	310.8	501.9	618.2	652.1



TEST NUMBER: 26362

CATALOG NUMBER: I2-WL-1T5-1C-UNV-04

CANDELA DISTRIBUTION (continued):

	0°	22.5°	45°	67.5°	90°
112.5°	226.4	336.2	514.6	638.8	672.7
115°	257.9	363.1	522.8	658.7	692.3
117.5°	289.2	387.5	533.8	664.8	706.7
120°	319.7	410.3	550.3	664.7	706.8
122.5°	348.7	432.0	567.0	665.8	702.9
125°	376.6	452.3	583.3	672.2	702.7
127.5°	403.4	472.2	599.4	682.0	708.9
130°	429.3	491.7	614.5	691.5	716.8
132.5°	453.9	509.7	625.7	700.3	724.0
135°	477.3	526.5	633.1	708.6	730.4
137.5°	499.4	541.0	638.0	714.2	736.2
140°	520.3	555.7	642.6	712.6	738.8
142.5°	540.2	570.8	647.4	708.7	728.9
145°	558.9	585.9	652.3	707.5	726.6
147.5°	576.5	599.4	658.6	705.8	723.0
150°	592.4	611.0	661.9	703.4	718.5
152.5°	607.2	621.3	665.3	699.2	712.4
155°	620.6	631.2	668.2	695.2	706.9
157.5°	632.4	639.5	669.3	690.6	700.4
160°	643.1	646.5	670.3	687.9	695.1
162.5°	652.7	653.6	671.7	684.4	690.8
165°	661.4	660.2	671.9	680.9	686.1
167.5°	668.7	665.1	673.9	677.1	682.1
170°	675.3	669.7	674.8	673.9	678.1
172.5°	680.4	673.4	675.6	673.5	676.3
175°	684.1	676.1	675.7	671.6	672.9
177.5°	686.5	677.5	675.6	669.6	671.0
180°	675.9	675.9	675.9	675.9	675.9

(END OF REPORT)